

Supplementary Information for Chronic Obstructive Pulmonary Disease: Novel Genes Detection with Penalized Logistic Regression

Kimiya Gohari, Ph.D.¹, Anoshirvan Kazemnejad, Ph.D.^{1*}, Shayan Mostafaei, Ph.D.², Samaneh Saberi, Ph.D.³,
Ali Sheidaei, Ph.D.⁴

1. Department of Biostatistics, Faculty of Medical Sciences, Tarbiat Modares University, Tehran, Iran

2. Division of Clinical Geriatrics, Department of Neurobiology, Care Sciences and Society, Karolinska Institute, Stockholm, Sweden

3. HPGC Research Group, Medical Biotechnology Department, Biotechnology Research Center, Pasteur Institute of Iran, Tehran, Iran

4. Department of Epidemiology and Biostatistics, School of Public Health, Tehran University of Medical Sciences, Tehran, Iran

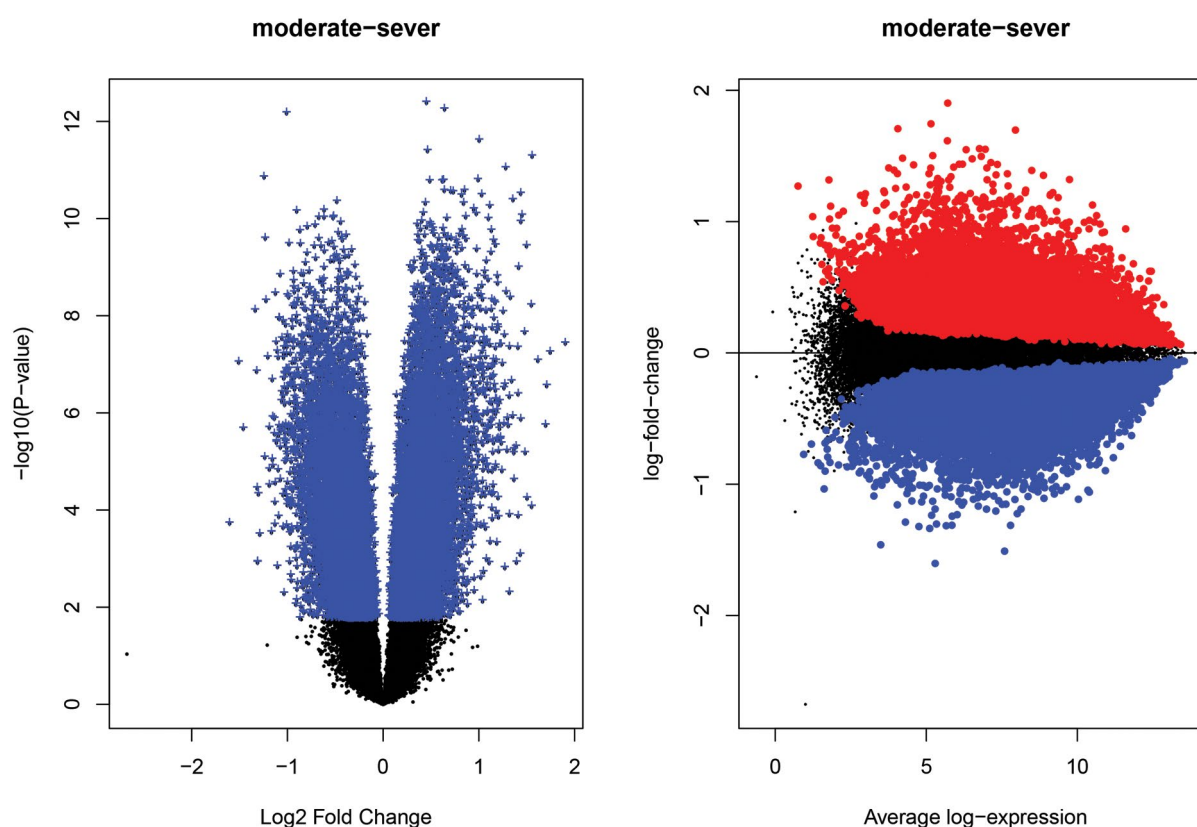


Fig.S1: The results of the quality control test, the volcano plot (left panel), and the MD plot (right panel).

Received: 08/July/2022, Revised: 10/December/2022, Accepted: 24/December/2022

*Corresponding address: P.O.Box: 14115-111, Department of Biostatistics, Faculty of Medical Sciences, Tarbiat Modares University, Tehran, Iran
Email: Kazem_an@modares.ac.ir