

Supplementary Information for

Proteomics Study of Mesenchymal Stem Cell-Like Cells Obtained from Tumor Microenvironment of Patients with Malignant and Benign Salivary Gland Tumors

Mohammad Reza Haghshenas, Ph.D.¹, Nasrollah Erfani, Ph.D.^{1,2}, Soolmaz Khansalar, M.Sc.¹, Bijan Khademi, M.D.³,
 Mohammad Javad Ashraf, M.D.⁴, Mahboobeh Razmkhah, Ph.D.^{1*}, Abbas Ghaderi, Ph.D.^{1,2*}

1. Shiraz Institute for Cancer Research, School of Medicine, Shiraz University of Medical Sciences, Shiraz, Iran

2. Department of Immunology, School of Medicine, Shiraz University of Medical Sciences, Shiraz, Iran

3. Otolaryngology Research Center, Department of Otolaryngology, Shiraz University of Medical Sciences, Shiraz, Iran

4. Department of Pathology, Khalili Hospital, Shiraz University of Medical Sciences, Shiraz, Iran

*Corresponding Address: P.O.Box: 71345-3119, Shiraz Institute for Cancer Research, School of Medicine, Shiraz University of Medical Sciences, Shiraz, Iran

Emails: razmkhah@sums.ac.ir, ghaderia@sums.ac.ir

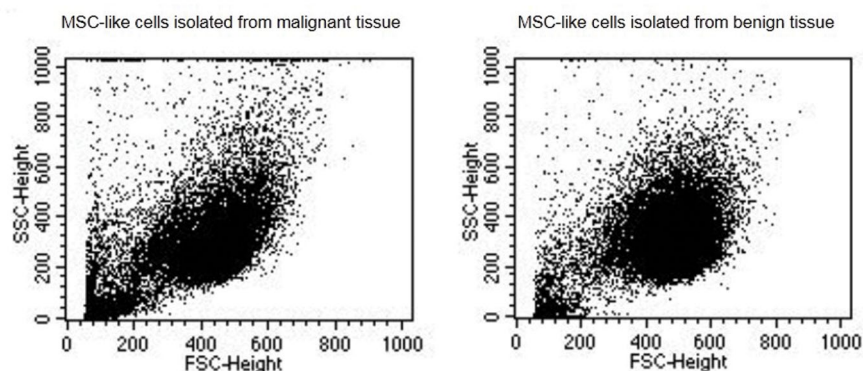


Fig.S1: Flow cytometric analysis of mesenchymal stem cell (MSC)-like cells. Granularity and size of MSC-like cells isolated from malignant (Left side) and benign (Right side) tumor tissues according to forward (F-) and side (S-) scatter (SC) dot plots.