

# Multiple Sclerosis: Pathogenesis, Symptoms, Diagnoses and Cell-Based Therapy

Nazem Ghasemi, Ph.D.<sup>1</sup>, Shahnaz Razavi, Ph.D.<sup>1\*</sup>, Elham Nikzad, B.Sc.<sup>2</sup>

1. Department of Anatomical Sciences, School of Medicine, Isfahan University of Medical Sciences, Isfahan, Iran

2. Jesus Son of Mary Hospital, Isfahan University of Medical Sciences, Isfahan, Iran

\*Corresponding Address: P.O.Box: 81745/176, Department of Anatomical Sciences, School of Medicine, Isfahan University of Medical Sciences, Isfahan, Iran

Email: razavi@med.mui.ac.ir

Received: 9/Dec/2015, Accepted: 7/Jun/2016

## Abstract

Multiple sclerosis (MS) is a chronic inflammatory disease characterized by central nervous system (CNS) lesions that can lead to severe physical or cognitive disability as well as neurological defects. Although the etiology and pathogenesis of MS remains unclear, the present documents illustrate that the cause of MS is multifactorial and include genetic predisposition together with environmental factors such as exposure to infectious agents, vitamin deficiencies, and smoking. These agents are able to trigger a cascade of events in the immune system which lead to neuronal cell death accompanied by nerve demyelination and neuronal dysfunction. Conventional therapies for MS are based on the use of anti-inflammatory and immunomodulatory drugs, but these treatments are not able to stop the destruction of nerve tissue. Thus, other strategies such as stem cell transplantation have been proposed for the treatment of MS.

Overall, it is important that neurologists be aware of current information regarding the pathogenesis, etiology, diagnostic criteria, and treatment of MS. Thus, this issue has been discussed according to recent available information.

**Keywords:** Multiple Sclerosis, Cell Therapy, Etiology, Demyelination

Cell Journal(Yakhteh), Vol 19, No 1, Apr-Jun (Spring) 2017, Pages: 1-10

**Citation:** Ghasemi N, Razavi Sh, Nikzad E. Multiple sclerosis: pathogenesis, symptoms, diagnoses and cell-based therapy. Cell J. 2017; 19(1): 1-10.

## Introduction

Multiple sclerosis (MS), the most prevalent neurological disability, is an autoimmune-mediated disorder that affects the central nervous system (CNS) and often leads to severe physical or cognitive incapacitation as well as neurological problems in young adults (1). Multifocal zones of inflammation due to focal T-lymphocytic and macrophage infiltrations, and oligodendrocyte death are the primary causes of myelin sheath destruction (2) that result in the formation of CNS plaques composed of inflammatory cells and their products, demyelinated and transected axons, and astrogliosis in both white and gray matter. These lesions can cross-talk with the correct transmission of nerve impulses and lead to neuronal dysfunction such as autonomic and sensorimotor defects, visual disturbances, ataxia, fatigue, difficulties in

thinking, and emotional problems (1).

Subtypes of MS are considered important not only for prognosis but also for treatment decisions and include: relapsing remitting MS (RRMS), primary progressive MS (PPMS), secondary progressive MS (SPMS), and progressive relapsing MS (PRMS). RRMS is the most common subtype (approximately 87%) which characterized by unpredictable acute attacks followed by periods of remission (3). During RRMS, inflammatory attacks on myelin and nerve fibers occur. Activated immune cells cause lesions in the CNS which generate symptoms of visual impairments, tingling and numbness, episodic bouts of fatigue, intestinal and urinary system disorders, spasticity, and learning and memory impairment. Approximately 10-15% of MS patients are diagnosed with PPMS which

largely affect the nerves of the spinal cord. PPMS patients tend to have fewer brain lesions. Induced symptoms include problems with walking, weakness, stiffness, and trouble with balance. Nearly 65% of patients with RRMS will subsequently develop SPMS which is considered the second phase of this disease. Many individuals experience increased weakness, intestinal and urinary system disorders, fatigue, stiffness, mental disorders, and psychological impairment. Finally, PRMS is the least common type of MS that occurs in approximately 5% of patients and is associated with symptoms such as eye pain and double vision, along with sexual, intestinal and urinary system dysfunction, dizziness, and depression. Generally MS is detected between the ages of 20 and 40 years, but less than 1% can occur in childhood and approximately 2-10% after 50 years of age (4, 5).

This pathologic condition affects women more than men (sex ratio 2.5:1) and the prevalence varies by geographic area, ranging from 120 per 100,000 individuals (6, 7). The etiology of MS remains unclear, however it can be considered a multifactorial disease and include a genetic predisposition combined with environmental influences (8).

The initial treatment strategy for MS is largely based on disease-modifying drugs such as interferon- $\beta$  and glatiramer acetate (9, 10). The effects of these treatments are partially for symptomatic alleviation and do not stop the ongoing neurodegeneration.

Currently, a stem cell-based regenerative medicine paradigm has been proposed for the treatment of MS (11-13). Adult stem cells, including hematopoietic and mesenchymal stem cells (MSCs), are undifferentiated cells used to treat MS due to their immunomodulatory effects and neuroprotective potential (14).

We review the pathogenesis, a number of environmental factors, genetic susceptibility, diagnostic criteria, and treatment of MS.

### **Pathogenesis of multiple sclerosis**

Inflammation of the white and gray matter tissues in the CNS due to focal immune cell infiltration and their cytokines are the incipient cause of damage in MS. Many studies have suggested T helper (Th) cell (also known as CD4+ T cells) intervention and adaptive immune responses which initiated by interaction between antigen presenting cells (APCs) with T lymphocytes play an important role in the initiation and progression

of MS (15, 16). Pathogen-associated molecules simultaneously bind to toll-like receptors on APCs and production of specific cytokines that include interleukin (IL)-12, IL-23 and IL-4 begins that these cytokines induce CD4+ T cell differentiation into Th1, Th2, or Th17 phenotypes which have ability to release special cytokines. Interferon gamma (IFN $\gamma$ ) or type II interferon and tumor necrosis factor alpha (TNF- $\alpha$ ) are proinflammatory cytokines critical for innate and adaptive immunity. These cytokines are produced by Th1 cells (17). They have the ability to promote inflammation by suppressing Th2 differentiation. Th2 cells secrete the anti-inflammatory cytokines, IL-4 and IL-13 (18, 19). IL-4 reduces pathological inflammation via increase in M2 macrophage (or repair macrophages) and alternative activation of M1 macrophages that promote inflammation. The effects of IL-13 on immune cells is similar to IL-4. This cytokine, by secretion of matrix metalloproteinase, has anti-inflammatory properties especially during allergic inflammation (20). Th17 is another CD4+ T cells which induces a large number of cytokines (IL-17, IL-21, IL-22 and IL-26) which are capable of promoting inflammation (Fig.1A) (21).

B lymphocytes and their cytokines are other factors in the pathogenesis of MS. Lymphotoxin [or transforming growth factor beta (TGF- $\beta$ )] and TNF- $\alpha$  produced by these cells promotes inflammation. In addition, these cells are capable of producing IL-10 which is an anti-inflammatory cytokine. Hence, B lymphocytes have both positive and negative effects in the development of MS (22).

Many studies have shown that in addition to the above-mentioned cells, CD8+ T cells (or cytotoxic T cells) can be found in MS lesions (23). These cells, via the production of cytolytic proteins such as perforin, mediate suppression and inactivation of CD4+ T cells. Moreover, these cells thorough increase vascular permeability, glial cells destroy and trigger of oligodendrocyte death play an important role in the pathogenesis of MS. In addition to CNS inflammation, the myelin repair process due to oligodendrocyte death is also impaired (16).

Fas ligand (FasL) is produced by lymphocyte cells. This ligand binds to Fas receptors [cell surface receptor that belongs to the TNF receptor superfamily] on oligodendrocyte cells which begins the apoptosis process of these cells (24). Therefore, the numbers of myelin synthesis cells reduce and will impair synthesis of the myelin sheath (Fig.1B).

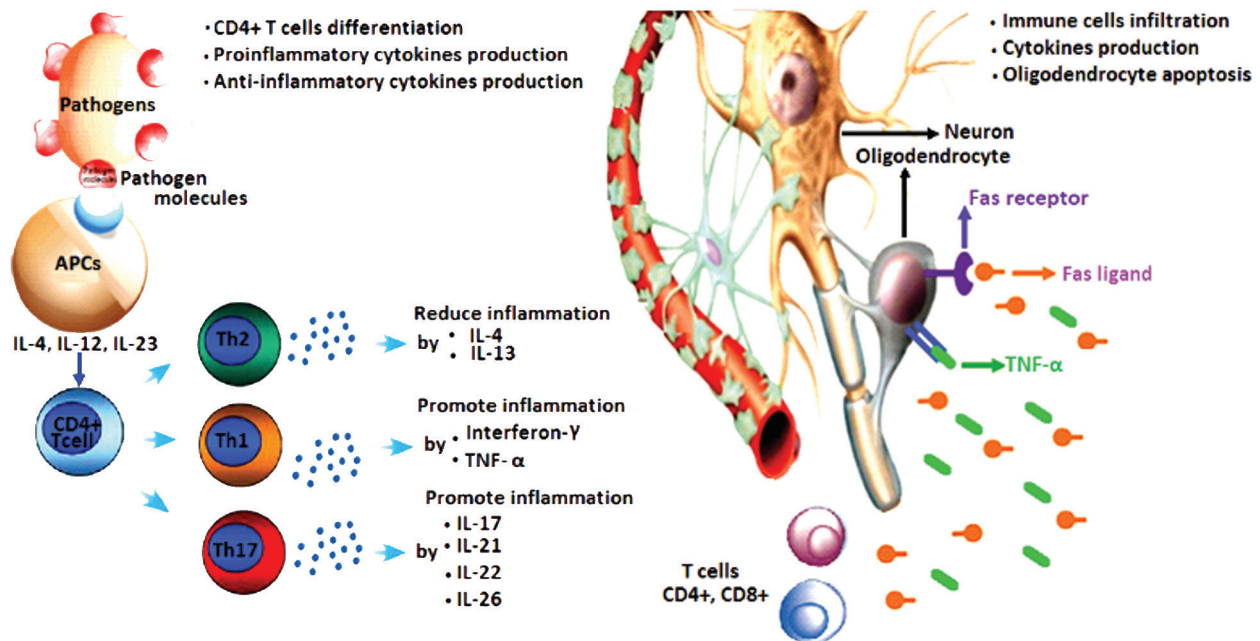


Fig.1: Immune cells and their cytokines which involved in the pathogenesis of multiple sclerosis (MS).

## Environmental factors

Environmental factors, including exposure to viral and bacterial agents such as Epstein Barr virus (EBV), human herpes virus type 6, and mycoplasma pneumonia (25), in addition to smoking (26), vitamin deficiency (27), diet (28, 29), and exposure to UV radiation (30) are associated with the onset of MS.

The foreign agents may have a nuclear antigen that is structurally homologous with myelin sheath components such as proteolipid protein, myelin basic protein, and myelin-associated glycoprotein. Thus, when immune cells are activated by these pathogens, myelin sheath lesions will form.

Currently, evidence suggests that smoking, due to nitric oxide (NO) and carbon monoxide (CO) production, plays an important role in MS. NO is a toxic soluble gas that in pathological concentrations can damage neurons and oligodendrocytes (31, 32). Lipid peroxidation and mitochondrial damage that result from NO can lead to oligodendrocytes apoptosis, axonal degeneration, and demyelination (33).

A previous study has shown that CO exposure

leads to blockage of tissue oxygenation (34), myelin basic protein (MBP) degradation, and axonal injury as well as a subsequent inflammatory response including activated microglia and CD4+ lymphocyte invasion of the CNS, which results in demyelination (35).

Vitamin deficiency (especially vitamins D and B12) are considered risk factors for MS. Vitamin D comprises a group of fat-soluble secosteroids that include vitamin D3 (cholecalciferol) and vitamin D2 (ergocalciferol). Cholecalciferol can be produced in the skin via the action of ultraviolet B radiation on 7-dehydrocholesterol which is the precursor to cholecalciferol.

In the liver, through hepatic hydroxylation, cholecalciferol is transformed into the prohormone calcidiol [25(OH)D3]. In the kidneys, by a renal hydroxylation step, a part of the calcidiol is changed to calcitriol which is the biologically active form of vitamin D. In the circulatory system calcitriol binds to a vitamin D-binding protein and is transported to various target tissues where it binds to specific intracellular receptors and has an important role in cell proliferation

and differentiation (36). In addition, this vitamin has a role in gene expression and regulation of immunity (37), as well as induction of B lymphocyte apoptosis (38), IL-10 synthesis (39), and suppression of proinflammatory cytokines such as IFN- $\gamma$  (40) and IL-2 (41).

Vitamin B12 is an important factor in the generation of myelin shell components. Thus, deficiency of this vitamin can be a major cause for neurological diseases such as MS. The results of a previous study on MS patients have indicated that the application of vitamin B12 benefitted the clinical course of MS (42).

Beyond vitamin deficiency, low-term sunlight exposure has been identified as a potential risk factor for MS. The results of a previous study have demonstrated a reverse association among exposure to ultraviolet radiation and the incidence of MS (30). In justifying this relationship, it can be said that sun light is a principal source of vitamin D3 and via induction of T regulatory (Treg) cells and anti-inflammatory cytokines such as IL-10 and TNF- $\alpha$ , it may have immunomodulatory effects in MS (43).

According to previous reports, diet could be an environmental factor involved in MS (44). Studies reported a significant negative association between MS risk and high fish intake (45), a positive significant association between high animal fat-based caloric intake and MS risk (46), a non-significant lower risk between incidence of MS and a higher intake of linoleic acid (28), and a positive significant association between obesity in adolescent girls and MS risk (47).

### Genetic susceptibility

A genetic predisposition may be involved in MS. Studies show that the risk of MS in family members of a patient depends on the amount of genetic information they share (48-50). Thus, the risk rate in monozygotic-twins that have 100% genetic similarity is approximately 25%. In all individuals who have 50% genetic similarities such as dizygotic twins and first degree relatives, this risk is 2-5% (51, 52). In addition, the risk in second degree relatives with 25% genetic similarity is 1-2%, whereas in third degree relatives with 12.5% genetic similarity, this risk is less than 1% (48-50). It has been shown that

in the human leukocyte antigen (HLA) region of chromosome 6 exists a group of genes associated with an increased risk of MS. Within this region HLA-DR2+ (53), HLA-DQ6 (1), DQA 0102 and DQB1 0602 (54), HLA-DRB1 (54), DR15 (55), DRB1\*1501, and DRB1\*1503 (56) are genes susceptible to the onset of MS. In addition to these alleles, IL-7 and IL-2 receptor alpha are other sensitive genes associated with MS (57). Unlike the aforementioned genes, HLA-C554 and HLA-DRB1\*11 have protective effects (1).

### Clinical manifestations

Usually, MS symptoms are unpredictable and uncertain. Since this disease can affect any region of the CNS, it can generate almost any neurologic symptom. In addition, symptoms vary greatly among patient and within one patient over time. During the course of MS, some abnormalities appear to be more dominant or have a greater effect on functional ability. Table 1 lists the more common symptoms of MS that may appear during different courses of the disease (58).

### Diagnosis of multiple sclerosis

Early detection of MS is important because it gives us the opportunity to seek treatment and plan for the future. An exact diagnosis of MS is based on medical history and neurological examination using imaging techniques such as magnetic resonance imaging (MRI), lumbar punctures (LP) for cerebrospinal fluid (CSF) analysis, evoked potentials, and blood samples analysis (59). Obtaining a history about the onset of the first symptoms, any neurological disorders as well as illnesses such as diabetes and thyroid diseases, food habits, geographic locations, and history of medications taken and substance abuse is important. In addition, an eye examination and evaluation of Babinski's reflexes can be useful. MRIs can identify any scar tissue formation and damage in the CNS. Evoked potentials test (60) that include visual, brain stem auditory, and somatosensory evoked potentials offers information about demyelination in the optic nerve and CNS. In addition, CSF analysis for myelin basic protein and immunoglobulin-gamma (IgG) determinations (61) and blood sample analysis for detect of vitamin deficiencies may be diagnostically helpful (62).



**Table 1:** More common symptoms of multiple sclerosis (MS)

Primary symptoms	More common symptoms	Sensory disturbances (numbness, tingling, itching, burning) Walking difficulties (due to fatigue, weakness, spasticity, loss of balance and tremor) Vision problems (diplopia, blurred, and pain on eye movement) Intestinal and urinary system dysfunction (constipation and bladder dysfunction) Cognitive and emotional impairment (inability to learn and depression) Dizziness and vertigo Sexual problems
	Less common symptoms	Swallowing problems (dysphagia) Speech problems (dysarthria) Breathing problems Hearing loss Seizures Headache
Secondary symptoms	Urinary tract infections Inactivity Immobility	
Tertiary symptoms	Social complications Vocational complications Psychological complications Depression	

### Cell-based therapy for multiple sclerosis

Currently, there is no definite cure for MS. However, immunomodulating and anti-inflammatory agents can diminish its progression and decrease some of the pathological symptoms. Immunomodulating agents including interferon beta and glatiramer acetate are used in non-symptomatic MS, RRMS, and SPMS (63). These agents can lessen some of the MS symptoms by inhibition of immune cell activation, decrease of proinflammatory cytokines production, matrix metalloproteinase activity reduction, induction of anti-inflammatory cytokine secretion (64), and by increasing expression of Foxp3 in CD4+ and CD25+Treg cells (65).

Others agents such as corticosteroids (inhibit lymphocyte proliferation and secretion of pro-inflammatory cytokines) (66), mitoxantrone (inhibit macrophage mediated myelin degradation and diminish the production of pro-inflammatory cytokines) (67), cyclophosphamide (increases Th2 cells) (68), mycophenolate (inhibits immune

cell activation and migration through the blood brain barrier) (69), and methotrexate (reduces inflammation) (70) are used in RRMS and SPMS.

Generally, these agents do not halt the ongoing progression of neurodegeneration. Therefore, other strategies such as stem cell-based therapy are proposed as potential novel paradigms for the treatment of MS.

Access to human MS neural tissue is limited and neural tissue biopsies are rarely performed. Hence, a variety of mammalian species - mice, rats, goats, pigs, sheep, rabbits, and non-human primates can be used for cell transplantation in order to study various aspects of MS (71). The mouse model is the most common animal model for MS due to its high biological similarity with humans. In addition, mice are small, relatively easy to handle, cost-effective, and undergo rapid reproduction. Thus, mice could be efficient research tools for more accurate, reproducible experiments in cell-based therapy. Prior to the conduction of any clinical trial, the medications in question should

be studied in larger animal models that are more similar to human physiological and anatomical structures, and their results must be acceptable.

On the other hand, stem cell therapy for treatment of MS has been conducted with various intentions, including: cell replacement, upregulation of nerve growth factors, down regulation of inflammatory cytokines and apoptotic factors. To date, cell transplantation experiments that have been conducted for MS treatment pursued at least one of these points.

MSCs are stem cells with the capability to differentiate into other cells. They display several significant anti-proliferative, anti-inflammatory and anti-apoptotic features (14). These cells are proven to be potentially effective in MS treatment due to their immunomodulatory properties (regulation and maintenance of Treg lymphocyte function) (72) and paracrine effects (via bioactive growth factor secretion and IL-6 and TGF- $\beta$  production) (73).

Previously, Mikaeili Agah et al. (74) reported that human Wharton's jelly stem cell-derived oligodendrocyte progenitor cells (hWJ-MSC-derived OPCs) transplanted into the brain ventricles of an MS mouse model significantly diminished the clinical signs of MS and induced functional improvements. In addition, histological examinations demonstrated that hWJ-MSC-derived OPCs transplantation promoted the regeneration of myelin sheaths in the brain lesions. Pluchino et al. (75) reported similar functional improvements following transplantation of adult neural stem cell into an animal model of MS. The result of this study demonstrated that significant numbers of transplanted cells migrated into demyelinating lesions and differentiated into mature cells. They observed functional recovery due to remyelination improvement following increased oligodendrocyte progenitor cells and decreased astrogliosis. As seen, these studies with hWJ-MSC and adult neural stem cell were conducted for cell replacement and not considered for other cell therapy purposes.

MSCs derived from human embryonic stem cells (hES-MSCs) appeared to be a better cell source compared to human bone marrow-derived MSCs (BM-MSCs) for treatment in a mouse model of MS [experimental autoimmune encephalitis (EAE)] due to BM-MSCs increased IL-6 expression. The results

showed that hES-MSCs considerably decreased clinical signs and prevented neuronal demyelination. The EAE disease-modifying effect of hES-MSCs was much higher than BM-MSCs (76).

Available evidence indicated that placental MSCs showed therapeutic effects in an EAE mouse model of MS. These effects were caused by reduction of anti-inflammatory proteins such as TNF- $\alpha$ -stimulated gene/protein 6 (TSG-6) in the inflammatory regions (77). Trubiani et al. (78) reported that human periodontal ligament stem cells (hPDLSCs) seemed to be ideal sources for MS treatment due to their ability to secrete neurotrophic factors and by modulate expression of TNF- $\alpha$ , IL-1 $\beta$ , IL-10, Nrf2, and Foxp3.

Recently, it has been reported that olfactory ensheathing cell (OEC) transplantation in a cuprizone model of MS improved myelin restoration through modification of MBP and phospholipid P (PLP) levels of the myelin sheath (79). Ravanidis et al. (80) demonstrated that subcutaneously transplanted neural precursor cells improved the clinical outcome and pathological features of EAE by modulating chemokine levels.

Bai et al. (81) reported that MSCs can reduce mouse neural functional deficits through modulation of the immune response and remyelination process and by promotion of the development of oligodendrocytes and neurons.

Successful experiments in animal models of neurodegenerative diseases such as MS have shown that neurotrophic factor secreting cells (NTF-SCs) differentiated from MSCs can play a pivotal role in impeding various neurodegenerative processes. NTF-SCs, by secreting a group of nerve growth factors necessary for neuronal development and survival, pave the way for use of NTF cells as treatment for MS patients (13). Transplanted hES-MSCs, placental MSCs, hPDLSCs, NTF-SCs, and OECs in MS models have resulted in remyelination improvements due to suppression of the inflammatory response, modulation of the immune response, and nerve growth factors secretion (13, 76-79). However, other types of stem cells are required which not only have these effects but also can be easily differentiated into oligodendrocyte cells.

Adipose-derived stem cells (ADSCs) are a population of MSCs that are an abundant and easily

accessible cell source for clinical applications. These cells can differentiate into other cells outside their lineage such as neurons, NTF-SCs, and Schwann cells (82-84). ADSCs have the ability to secrete many identified NTF factors such as brain-derived neurotrophic factor, nerve growth factor, and glial cell line-derived neurotrophic factor (84). In addition, ADSCs have other beneficial characteristics such as their lack of both HLA-class II antigen expression and thus xenogeneic transplantation possibility (85); their ability to migrate through  $\alpha$ 4B1 expression (86); and high antioxidant, anti-apoptotic, immunomodulatory, and anti-inflammatory effects (87, 88).

In our previous studies we have shown that human ADSC transplantation into a lysolecithin lesion as a model of MS led to recovery of locomotor function and decreased pathological signs such as demyelination (11, 89). These results were consistent with other recent studies which showed that intravenous administration of human adipose-derived MSCs could reverse clinical course of EAE, particularly at the peak of this disease via downregulation of IL-17 (90). These findings might be explained by the fact that ADSCs with a wide range of valuable properties could replace degenerated neurons, provide a proper environment for retention of the remaining neurons, and promote tissue regeneration. Therefore, ADSCs could pursue the goals of cell transplantation and might be considered a proper cell source candidate for cell based therapy in treatment of MS.

## Conclusion

The precise cause of MS is unknown. Nonetheless, genetic predispositions combined with environmental influences play an important role in the pathogenesis of this disease. The therapeutic effects of several agents including immunomodulating and anti-inflammatory drugs in MS have been studied. However, current treatments are not able to halt the ongoing progression of neurodegeneration. Thus, beside drug therapies, ADSCs which pursue the goals of cell transplantation may potentially provide a novel strategy for treatment of neurological diseases.

## Acknowledgments

The authors are grateful to the Iranian Council of

Stem Cell Technology and Isfahan University of Medical Sciences for their financial support (Grant no. 189067). The authors declare that they have no conflicts of interest.

## References

1. Compston A, Coles A. Multiple sclerosis. *Lancet*. 2008; 372(9648): 1502-1517.
2. Loma I, Heyman R. Multiple sclerosis: pathogenesis and treatment. *Curr Neuropharmacol*. 2011; 9(3): 409-416.
3. Weiner HL. A shift from adaptive to innate immunity: a potential mechanism of disease progression in multiple sclerosis. *J Neurol*. 2008; 255 Suppl 1: 3-11.
4. Gadot N. Multiple sclerosis in children. *Brain Dev*. 2003; 25(4): 229-232.
5. Boiko A, Vorobeychik G, Paty D, Devonshire V, Sondovnick D; University of British Columbia MS Clinic Neurologists. Early onset multiple sclerosis: a long longitudinal study. *Neurology*. 2002; 59(7): 1006-1010.
6. Khan F, Turner-Stokes L, Ng L, Kilpatrick T. Multidisciplinary rehabilitation for adults with multiple sclerosis. *J Neurol Neurosurg Psychiatry*. 2008; 79(2): 114.
7. Holloman JP, Ho CC, Hukki A, Huntley JL, Gallicano GI. The development of hematopoietic and mesenchymal stem cell transplantation as an effective treatment for multiple sclerosis. *Am J Stem Cells*. 2013; 2(2): 95-107.
8. Hatch MN, Schaumburg CS, Lane TE, Keirstead HS. Endogenous remyelination is induced by transplant rejection in a viral model of multiple sclerosis. *J Neuroimmunol*. 2009; 212(1-2): 74-81.
9. de Andrés C, Aristimuño C, de Las Heras V, Martínez-Ginés ML, Bartolomé M, Arroyo R, et al. Interferon beta-1a therapy enhances CD4+ regulatory T-cell function: an ex vivo and in vitro longitudinal study in relapsing-remitting multiple sclerosis. *J Neuroimmunol*. 2007; 182(1-2): 204-211.
10. Haas J, Korporal M, Balint B, Fritzsching B, Schwarz A, Wildemann B. Glatiramer acetate improves regulatory T-cell function by expansion of naive CD4 (+)CD25(+) FOXP3(+)/CD31(+) T-cells in patients with multiple sclerosis. *J Neuroimmunol*. 2009; 216(1-2): 113-117.
11. Ghasemi N, Razavi S, Mardani M, Esfandiari E, Salehi H, ZarkeshEsfahani SH. Transplantation of human adipose-derived stem cells enhances remyelination in lysolecithin-induced focal demyelination of rat spinal cord. *Mol Biotechnol*. 2014; 56(5): 470-478.
12. Constantin G, Marconi S, Rossi B, Angiari S, Calderan L, Anghileri E, et al. Adipose-derived mesenchymal stem cells ameliorate chronic experimental autoimmune encephalomyelitis. *Stem Cells*. 2009; 27(10): 2624-2635.
13. Sadan O, Shemesh N, Cohen Y, Melamed E, Offen D. Adult neurotrophic factor-secreting stem cells: a potential novel therapy for neurodegenerative diseases. *Isr Med Assoc J*. 2009; 11(4): 201-204.
14. Mohyeddin Bonab M, Mohajeri M, Sahraian MA, Yazdani-far M, Aghsaie A, Farazmand A, et al. Evaluation of cytokines in multiple sclerosis patients treated with mesenchymal stem cells. *Arch Med Res*. 2013; 44(4): 266-272.
15. Gandhi R, Laroni A, Weiner HL. Role of the innate immune system in the pathogenesis of multiple sclerosis. *J Neuroimmunol*. 2009; 221(1-2): 7-14.
16. Kasper LH, Shoemaker J. Multiple sclerosis immunology: the healthy immune system vs the MS immune system.

- Neurology. 2010; 74 Suppl 1: S2-8.
17. Schoenborn JR, Wilson CB. Regulation of interferon-gamma during innate and adaptive immune responses. *Adv Immunol.* 2007; 96: 41-101.
  18. Zhu J, Paul WE. CD4 T cells: fates, functions, and faults. *Blood.* 2008; 112(5): 1557-1569.
  19. Minty A, Chalou P, Derocq JM, Dumont X, Guillemot JC, Kaghad M, et al. Interleukin-13 is a new human lymphokine regulating inflammatory and immune responses. *Nature.* 1993; 362(6417): 248-250.
  20. Wynn TA. IL-13 effector functions. *Annu Rev Immunol.* 2003; 21: 425-456.
  21. Ouyang W, Kolls JK, Zheng Y. The biological functions of T helper 17 cell effector cytokines in inflammation. *Immunity.* 2008; 28(4): 454-467.
  22. Duddy M, Niino M, Adatia F, Hebert S, Freedman M, Atkins H, et al. Distinct effector cytokine profiles of memory and naive human B cell subsets and implication in multiple sclerosis. *J Immunol.* 2007; 178(10): 6092-6099.
  23. Kouchaki E, Salehi M, Reza Sharif M, Nikouejad H, Akbari H. Numerical status of CD4(+)CD25(+)FoxP3(+) and CD8(+)CD28(-) regulatory T cells in multiple sclerosis. *Iran J Basic Med Sci.* 2014; 17(4): 250-255.
  24. Li W, Maeda Y, Ming X, Cook S, Chapin J, Husar W, et al. Apoptotic death following Fas activation in human oligodendrocyte hybrid cultures. *J Neurosci Res.* 2002; 69(2): 189-196.
  25. Fujinami RS, von Herath MG, Christen U, Whitton JL. Molecular mimicry, bystander activation, or viral persistence: infections and autoimmune disease. *Clin Microbiol Rev.* 2006; 19(1): 80-94.
  26. O'Gorman C, Bukhari W, Todd A, Freeman S, Broadley SA. Smoking increases the risk of multiple sclerosis in Queensland, Australia. *J Clin Neurosci.* 2014; 21(10): 1730-1733.
  27. Speer G. Impact of vitamin D in neurological diseases and neurorehabilitation: from dementia to multiple sclerosis. Part I: the role of vitamin D in the prevention and treatment of multiple sclerosis. *Ideggyogy Sz.* 2013; 66(9-10): 293-303.
  28. Zhang SM, Willett WC, Hernán MA, Olek MJ, Ascherio A. Dietary fat in relation to risk of multiple sclerosis among two large cohorts of women. *Am J Epidemiol.* 2000; 152(11): 1056-1064.
  29. Bäärnhielm M, Olsson T, Alfredsson L. Fatty fish intake is associated with decreased occurrence of multiple sclerosis. *Mult Scler.* 2014; 20(6): 726-732.
  30. Sloka S, Silva C, Pryse-Phillips W, Patten S, Metz L, Yong VW. A quantitative analysis of suspected environmental causes of MS. *Can J Neurol Sci.* 2011; 38(1): 98-105.
  31. Dawson VL, Dawson TM, Bartley DA, Uhl GR, Snyder SH. Mechanisms of nitric oxide-mediated neurotoxicity in primary brain cultures. *J Neurosci.* 1993; 13(6): 2651-2661.
  32. Merrill JE, Ignarro LJ, Sherman MP, Melinek J, Lane TE. Microglial cell cytotoxicity of oligodendrocytes is mediated through nitric oxide. *J Immunol.* 1993; 151(4): 2132-2141.
  33. Mitrovic B, Ignarro LJ, Vinters HV, Akers MA, Schmid I, Uittenbogaart C, et al. Nitric oxide induces necrotic but not apoptotic cell death in oligodendrocytes. *Neuroscience.* 1995; 65(2): 531-539.
  34. Somogyi E, Balogh I, Rubányi G, Sótónyi P, Szegedi L. New findings concerning the pathogenesis of acute carbon monoxide (CO) poisoning. *Am J Forensic Med Pathol.* 1981; 2(1): 31-39.
  35. Thom SR, Bhopale VM, Fisher D, Zhang J, Gimotty P. Delayed neuropathology after carbon monoxide poisoning is immune-mediated. *Proc Natl Acad Sci USA.* 2004; 101(37): 13660-13665.
  36. Prosser DE, Jones G. Enzymes involved in the activation and inactivation of vitamin D. *Trends Biochem Sci.* 2004; 29(12): 664-673.
  37. VanAmerongen BM, Dijkstra CD, Lips P, Polman CH. Multiple sclerosis and vitamin D: an update. *Eur J Clin Nutr.* 2004; 58(8): 1095-1109.
  38. Chen S, Sims GP, Chen XX, Gu YY, Chen S, Lipsky PE. Modulatory effects of 1,25-dihydroxyvitamin D3 on human B Cell differentiation. *J Immunol.* 2007; 179(3): 1634-1647.
  39. Mowry EM, Krupp LB, Milazzo M, Chabas D, Strober JB, Belman AL, et al. Vitamin D status is associated with relapse rate in pediatric-onset multiple sclerosis. *Ann Neurol.* 2010; 67(5): 618-624.
  40. Banwell B, Bar-Or A, Arnold DL, Sadovnick D, Narayanan S, McGowan M, et al. Clinical, environmental, and genetic determinants of multiple sclerosis in children with acute demyelination: a prospective national cohort study. *Lancet Neurol.* 2011; 10(5): 436-445.
  41. Disanto G, Morahan JM, Ramagopalan SV. Multiple sclerosis: risk factors and their interactions. *CNS Neurol Disord Drug Targets.* 2012; 11(5): 545-555.
  42. Wade DT, Young CA, Chaudhuri KR, Davidson DL. A randomised placebo controlled exploratory study of vitamin B-12, lofepramine, and L-phenylalanine (the "CariLoder regime") in the treatment of multiple sclerosis. *J Neurol Neurosurg Psychiatry.* 2002; 73(3): 246-249.
  43. Bäärnhielm M, Hedström AK, Kockum I, Sundqvist E, Gustafsson SA, Hillert J, et al. Sunlight is associated with decreased multiple sclerosis risk: no interaction with human leukocyte antigen-DRB1\*15. *Eur J Neurol.* 2012; 19(7): 955-962.
  44. Bates D, Cartledge NE, French JM, Jackson MJ, Nightingale S, Shaw DA, et al. A double-blind controlled trial of long chain N-3 polyunsaturated fatty acids in the treatment of multiple sclerosis. *J Neurol Neurosurg Psychiatr.* 1989; 52(1): 18-22.
  45. Swank RL, Lerstad O, Strom A, Backer J. Multiple sclerosis in rural Norway its geographic and occupational incidence in relation to nutrition. *N Engl J Med.* 1952; 246(19): 722-728.
  46. Alter M, Yamoor M, Harshe M. Multiple sclerosis and nutrition. *Arch Neurol.* 1974; 31(4): 267-272.
  47. Langer-Gould A, Brara SM, Beaber BE, Koebrick C. Childhood obesity and risk of pediatric multiple sclerosis and clinically isolated syndrome. *Neurology.* 2013; 80(6): 548-552.
  48. Ebers GC, Sadovnick AD, Risch NJ. A genetic basis for familial aggregation in multiple sclerosis. Canadian Collaborative Study Group. *Nature.* 1995; 377(6545): 150-151.
  49. Sadovnick AD, Ebers GC, Dyment DA, Risch NJ. Evidence for genetic basis of multiple sclerosis. The Canadian Collaborative Study Group. *Lancet.* 1996; 347(9017): 1728-1730.
  50. Sadovnick AD, Dircks A, Ebers GC. Genetic counselling in multiple sclerosis: risks to sibs and children of affected individuals. *Clin Genet.* 1999; 56(2): 118-122.
  51. Oksenberg JR, Baranzini SE, Sawcer S, Hauser SL. The genetics of multiple sclerosis: SNPs to pathways to pathogenesis. *Nat Rev Genet.* 2008; 9(7): 516-526.
  52. Willer CJ, Dyment DA, Risch NJ, Sadovnick AD, Ebers GC; Canadian Collaborative Study Group. Twin concord-



- ance and sibling recurrence rates in multiple sclerosis. *Proc Natl Acad Sci USA*. 2003; 100(22): 12877-12882.
53. Stewart GJ, McLeod JG, Basten A, Bashir HV. HLA family studies and multiple sclerosis: a common gene, dominantly expressed. *Hum Immunol*. 1981; 3(1): 13-29.
  54. Amirzargar A, Mytilineos J, Yousefipour A, Farjadian S, Scherer S, Opelz G, et al. HLA class II (DRB1, DQA1 and DQB1) associated genetic susceptibility in Iranian multiple sclerosis (MS) patients. *Eur J Immunogenet*. 1998; 25(4): 297-301.
  55. Masterman T, Ligers A, Olsson T, Andersson M, Olerup O, Hillert J. "HLA-DR15 is associated with lower age at onset in multiple sclerosis. *Ann Neurol*. 2000; 48(2): 211-219.
  56. Quelvenec E, Bera O, Cabre P, Alizadeh M, Smadja D, Jugde F, et al. Genetic and functional studies in multiple sclerosis patients from Martinique attest for a specific and direct role of the HLA-DR locus in the syndrome. *Tissue Antigens*. 2003; 61(2): 166-171.
  57. Gregory SG, Schmidt S, Seth P, Oksenberg JR, Hart J, Prokop A, et al. Interleukin 7 receptor alpha chain (IL7R) shows allelic and functional association with multiple sclerosis. *Nat Genet*. 2007; 39(9): 1083-1091.
  58. Gelfand JM. Multiple sclerosis: diagnosis, differential diagnosis, and clinical presentation. *Handb Clin Neurol*. 2014; 122: 269-290.
  59. Røsjø E, Myhr KM, Løken-Amsrud KI, Bakke SJ, Beiske AG, Bjerve KS, et al. Increasing serum levels of vitamin A, D and E are associated with alterations of different inflammation markers in patients with multiple sclerosis. *J Neuroimmunol*. 2014; 271(1-2): 60-65.
  60. Gronseth GS, Ashman EJ. Practice parameter: the usefulness of evoked potentials in identifying clinically silent lesions in patients with suspected multiple sclerosis (an evidence-based review): Report of the Quality Standards Subcommittee of the American Academy of Neurology. *Neurology*. 2000; 54(9): 11720-11725.
  61. Greene DN, Schmidt RL, Wilson AR, Freedman MS, Grenache DG. Cerebrospinal fluid myelin basic protein is frequently ordered but has little value: a test utilization study. *Am J Clin Pathol*. 2012; 138(2): 262-272.
  62. Shah I, James R, Barker J, Petroczi A, Naughton DP. Misleading measures in Vitamin D analysis: a novel LC-MS/MS assay to account for epimers and isobars. *Nutr J*. 2011; 10: 46.
  63. Tenenbaum SN, Segura MJ. Interferon beta-1a treatment in childhood and juvenile-onset multiple sclerosis. *Neurology*. 2006; 67(3): 511-513.
  64. Dhib-Jalbut S, Marks S. Interferon-beta mechanisms of action in multiple sclerosis. *Neurology*. 2010; 74 Suppl 1: S17-24.
  65. Racke MK, Lovett-Racke AE, Karandikar NJ. The mechanism of action of glatiramer acetate treatment in multiple sclerosis. *Neurology*. 2010; 74 Suppl 1: S25-30.
  66. Ciccone A, Beretta S, Brusaferrri F, Galea I, Protti A, Spreafico C. Corticosteroids for the long-term treatment in multiple sclerosis. *Cochrane Database Syst Rev*. 2008; (1): CD006264.
  67. Martinelli Boneschi F, Rovaris M, Capra R, Comi G. Mitoxantrone for multiple sclerosis. *Cochrane Database Syst Rev*. 2005; (4): CD002127.
  68. La Mantia L, Milanese C, Mascoli N, D'Amico R, Weinstock-Guttman B. Cyclophosphamide for multiple sclerosis. *Cochrane Database Syst Rev*. 2007; (1): CD002819.
  69. Vollmer T, Stewart T, Baxter N. Mitoxantrone and cytotoxic drugs' mechanisms of action. *Neurology*. 2010; 74 Suppl 1: S41-46.
  70. Gray O, McDonnell GV, Forbes RB. Methotrexate for multiple sclerosis. *Cochrane Database Syst Rev*. 2004; (2): CD003208.
  71. Baxter AG. The origin and application of experimental autoimmune encephalomyelitis. *Nat Rev Immunol*. 2007; 7(11): 904-912.
  72. Di Ianni M, Del Papa B, De Ioanni M, Moretti L, Bonifacio E, Cecchini D, et al. Mesenchymal cells recruit and regulate T regulatory cells. *Exp Hematol*. 2008; 36(3): 309-318.
  73. Svobodova E, Krulova M, Zajicova A, Pokorna K, Prochazkova J, Trosan P, et al. The role of mouse mesenchymal stem cells in differentiation of naive T-cells into anti-inflammatory regulatory T-cell or proinflammatory helper T-cell 17 population. *Stem Cells Dev*. 2012; 21(6): 901-910.
  74. Mikaeili Agah E, Parivar K, Joghataei MT. Therapeutic effect of transplanted human Wharton's jelly stem cell-derived oligodendrocyte progenitor cells (hWJ-MS-C-derived OPCs) in an animal model of multiple sclerosis. *Mol Neurobiol*. 2014; 49(2): 625-632.
  75. Pluchino S, Quattrini A, Brambilla E, Gritti A, Salani G, Dina G, et al. Injection of adult neurospheres induces recovery in a chronic model of multiple sclerosis. *Nature*. 2003; 422(6933): 688-694.
  76. Wang X, Kimbrel EA, Ijichi K, Paul D, Lazorchak AS, Chu J, et al. Human ESC-derived MSCs outperform bone marrow MSCs in the treatment of an EAE model of multiple sclerosis. *Stem Cell Reports*. 2014; 3(1): 115-130.
  77. Fisher-Shoval Y, Barhum Y, Sadan O, Yust-Katz S, Ben-Zur T, Lev N, et al. Transplantation of placenta-derived mesenchymal stem cells in the EAE mouse model of MS. *J Mol Neurosci*. 2012; 48(1): 176-184.
  78. Trubiani O, Giacoppo S, Ballerini P, Diomedea F, Piattelli A, Bramanti P, et al. Alternative source of stem cells derived from human periodontal ligament: a new treatment for experimental autoimmune encephalomyelitis. *Stem Cell Res Ther*. 2016; 7: 1.
  79. Azimi Alamouti M, Bakhtiyari M, Moradi F, Mokhtari T, Hedayatpour A, Zafari F, et al. Remyelination of the corpus callosum by olfactory ensheathing cell in an experimental model of multiple sclerosis. *Acta Med Iran*. 2015; 53(9): 533-539.
  80. Ravanidis S, Poulatsidou KN, Lagoudaki R, Touloumi O, Polyzoidou E, Lourbopoulos A, et al. Subcutaneous transplantation of neural precursor cells in experimental autoimmune encephalomyelitis reduces chemotactic signals in the central nervous system. *Stem Cells Transl Med*. 2015; 4(12): 1450-1462.
  81. Bai L, Lennon DP, Caplan AI, DeChant A, Hecker J, Kranso J, et al. Hepatocyte growth factor mediates mesenchymal stem cell-induced recovery in multiple sclerosis models. *Nat Neurosci*. 2012; 15(6): 862-870.
  82. Ghasemi N, Razavi Sh. Transdifferentiation potential of adipose-derived stem cells into neural lineage and their application. *Journal of Histology & Histopathology*. 2014; 1(1): 1-35.
  83. Razavi S, Mardani M, Kazemi M, Esfandiari E, Narimani M, Esmaeili A, et al. Effect of leukemia inhibitory factor on the myelinogenic ability of Schwann-like cells induced from human adipose-derived stem cells. *Cell Mol Neurobiol*. 2013; 33(2): 283-289.
  84. Razavi S, Razavi MR, Kheirollahi-Kouhestani M, Mardani M, Mostafavi FS. Co-culture with neurotrophic factor secreting cells induced from adipose-derived stem cells: promotes neurogenic differentiation. *Biochem Biophys*

- Res Commun. 2013; 440(3): 381-387.
85. Zuk P. Adipose-derived stem cells in tissue regeneration: a review. *ISRN Stem Cells*. 2013(2013): 1-35.
  86. Gronthos S, Franklin DM, Leddy HA, Robey PG, Storms RW, Gimble JM. Surface protein characterization of human adipose tissue-derived stromal cells. *J Cell Physiol*. 2001; 189(1): 54-63.
  87. Rehman J, Traktuev D, Li J, Merfeld-Clauss S, Temm-Grove CJ, Bovenkerk JE, et al. Secretion of angiogenic and antiapoptotic factors by human adipose stromal cells. *Circulation*. 2004; 109(10): 1292-1298.
  88. González MA, Gonzalez-Rey E, Rico L, Büscher D, Delgado M. Adipose-derived mesenchymal stem cells alleviate experimental colitis by inhibiting inflammatory and autoimmune responses. *Gastroenterology*. 2009; 136(3): 978-989.
  89. Ghasemi N, Razavi SH, Salehi H. Improvement of myelin ultrastructure after transplantation of human adipose tissue-derived stem cell in rat multiple sclerosis model. *J Isfahan Med Sch*. 2016; 33(366): 2333-2340.
  90. Shalaby SM, Sabbah NA, Saber T, Abdel Hamid RA. Adipose-derived mesenchymal stem cells modulate the immune response in chronic experimental autoimmune encephalomyelitis model. *IUBMB Life*. 2016; 68(2): 106-115.
-