

Isolation and Enrichment of Mouse Female Germ Line Stem Cells

Somayeh Khosravi-Farsani, Ph.D.^{1,2}, Fardin Amidi, Ph.D.¹, Mehryar Habibi Roudkenar, Ph.D.³, Aligholi Sobhani, Ph.D.^{1*}

1. Department of Anatomy, School of Medicine, Tehran University of Medical Sciences, Tehran, Iran
2. Cellular and Molecular Research Center, Shahrekord University of Medical Sciences, Shahrekord, Iran
3. Blood Transfusion Research Center, High Institute for Research and Education in Transfusion Medicine, Tehran, Iran

*Corresponding Address: Department of Anatomy, School of Medicine, Tehran University of Medical Sciences, Tehran, Iran

Email: sobhania@tums.ac.ir

Received: 14/Jun/2013, Accepted: 25/Dec/2013

Abstract

Objective: The existence of female germ-line stem cells (FGSCs) has been the subject of a wide range of recent studies. Successful isolation and culture of FGSCs could facilitate studies on regenerative medicine and infertility treatments in the near future. Our aim in the present study was evaluation of the most commonly used techniques in enrichment of FGSCs and in establishment of the best procedure.

Materials and Methods: In this experimental study, after digesting neonate ovary from C57Bl/6 mice, we performed 2 different isolation experiments: magnetic activated cell sorting (MACS) and pre-plating. MACS was applied using two different antibodies against mouse vasa homolog (MVH) and stage-specific embryonic antigen-1 (SSEA1) markers. After the cells were passaged and proliferated *in vitro*, colony-forming cells were characterized using reverse transcription-polymerase chain reaction (RT-PCR) (for analysis of expression of *Oct4*, *Nanog*, *C-kit*, *Fragilis*, *Mvh*, *Dazl*, *Scp3* and *Zp3*), alkaline phosphatase (AP) activity test and immunocytochemistry.

Results: Data showed that colonies can be seen more frequently in pre-plating technique than that in MACS. Using the SSEA1 antibody with MACS, $1.98 \pm 0.49\%$ (Mean \pm SDV) positive cells were yield as compared to the total cells sorted. The colonies formed after pre-plating expressed pluripotency and germ stem cell markers (*Oct4*, *Nanog*, *C-kit*, *Fragilis*, *Mvh* and *Dazl*) whereas did not express *Zp3* and *Scp3* at the mRNA level. Immunocytochemistry in these colonies further confirmed the presence of OCT4 and MVH proteins, and AP activity measured by AP-kit showed positive reaction.

Conclusion: We established a simple and an efficient pre-plating technique to culture and to enrich FGSCs from neonatal mouse ovaries.

Keywords: Stem Cell, Mouse, Ovary, Culture, Enrichment

Cell Journal(Yakhteh), Vol 16, No 4, Winter 2015, Pages: 406-415

Citation: Khosravi-Farsani S, Amidi F, Habibi Roudkenar M, Sobhani A. Isolation and enrichment of mouse female germ line stem cells. Cell J. 2015; 16(4): 406-415.

Introduction

Until recently, it has been generally accepted that all female germ cells commit to meiosis entrance before birth (1-3). Recent findings indicate that adult ovaries may have pluripotent cells (4-7). This specialized cell population is referred to as female germ-line stem cells (FGSCs) (5). Researchers could isolate these stem cells successfully from neonate and adult mice, while the cells were shown

to expand *in vitro* for months (6-8). In one of the experiments after transplantation of green fluorescent protein (GFP)-expressing isolated FGSCs to sterilized mice, cells could differentiate to mature oocytes, leading to GFP positive offspring (6). Recently White et al. (8) showed that isolated FGSCs from adult mouse ovaries and human ovarian cortical tissues have potential to expand *in vitro* and could spontaneously generate 35 to 50 mm

oocytes. This group also showed that injection of the human germ-line cells, expressing GFP, into human ovarian cortical biopsies leads to formation of follicles containing GFP-positive oocytes after xenotransplantation into immunodeficient female mice. The authors proposed that immature germ cells present in the adult mammals may be able to generate *de novo* oocytes in a favorable environment. As Tilly and Telfer stated, by repopulating adult ovaries with new oocytes and follicles, clinical intervention would no longer be an unreachable target (9). For establishing stem cells from mouse ovaries, researchers employed different techniques. They included magnetic activated cell sorting (MACS) using immunomagnetic beads coupled to mouse vasa homolog (MVH) and stage-specific embryonic antigen-1 (SSEA1), fluorescence-activated cell sorting (FACS) by MVH antibody, a transgenic mouse model in which GFP was expressed under a germ cell-specific Oct4 promoter and pre-plating (4, 6-8, 10). In these studies, they used neonate (6, 7) or adult ovarian tissues (4, 6, 8, 10). Although this body of work represents an important advance in the field of stem cell and neo-oogenesis, more studies are needed to be done to extend their finding in developing an effective strategy to purify and to enrich FGSCs. In this study, we tried to enrich these FGSCs by immunomagnetic isolation using MVH and SSEA1 antibodies and also by morphology-based selection after pre-plating technique. The latter has been used for enrichment of male germ-line stem cells (MGSCs) from testis (11). As researchers have found that FGSCs will decline by advancing age (12, 13), neonate ovaries were selected for our experiments. Then, we compared the colony formation in 3 different experiments, and finally, we characterized colonies and defined the potential for proliferation *in vitro* in the best obtained results.

Materials and Methods

All the chemicals used in this experimental study, except those mentioned, were purchased from Sigma-Aldrich Chemie, Germany. The Ethic Committee of Tehran University of Medical Sciences confirmed the study.

Mouse embryonic fibroblast (MEF) cell preparation

Embryos (E13-16) from a pregnant C57Bl/6 mouse were removed and rinsed in phosphate-buffered saline (PBS). The placenta and fetal membranes, head, liver and heart were removed. Mouse embryonic fibroblast (MEF) cells suspension were collected after tissue digestion in 0.25% trypsin solution and passed through a screen. Cells were cultured in Dulbecco's modified Eagle's medium (DMEM) with high-glucose (Gibco, USA), 1% non-essential amino acids (Gibco, USA), 10% fetal bovine serum (FBS) (Gibco, USA), 1% glutamax (Gibco, USA), and penicillin/ streptomycin (Gibco, USA). We used MEF passages 2-4 times to make feeder layer. A density of 5×10^4 inactivated MEF cells/ cm (treated with 10 μ g/ml mitomycin C) was suitable as feeder layer for cultivation of undifferentiated FGSCs.

Ovarian cell preparation

We used about 20 ovaries from 3- to 5-day-old C57Bl/6 mice for each experiment. For isolation of ovarian cells, an enzymatic digestion method was used as described previously (7). Briefly, after complete dispersion in 1 mg/ml collagenase type IV (Gibco, USA) and DNase type I (10 μ g/ml), enzyme was neutralized by adding 10% FBS. The dissociated cells were passed through a 30 μ m cell strainer (130-041-407, MiltenyiBiotec Inc., UK). The cell suspension was centrifuged at 300 g for 5 minutes, the supernatant was discarded, and the pellet was then subjected to 3 different experiments. The animal care was conducted in accordance with the institutional guidelines of Tehran University of Medical Sciences and the National Institutes of Health (NIH) guidelines for the care and use of laboratory animals.

Isolation and purification of FGSCs

Experimental design

Experiment 1: isolation of SSEA1⁺ cells by MACS

SSEA1 is supposed to be expressed on mouse primordial germ cells (PGCs) and mouse stem cells (14, 15). Therefore, ovarian cell pellet was re-suspended in MACS buffer [PBS containing 0.5% BSA and 2 mM ethylene diaminetetraacetic acid (EDTA)]. Anti-SSEA1 microbead (130-

094-530, MiltenyiBiotec Inc., UK) was added to the cell suspension, and SSEA1⁺ cells were then separated on MS columns in a mini MACS separation unit according to the manufacturer's instruction (MiltenyiBiotec Inc., UK). Isolated cells were transferred onto a mitotically inactivated MEF in 4-well plates containing culture media as described previously (6) at 37°C in a 5% CO₂ atmosphere.

Flow cytometry

Purity of the separated population just after MACS was determined by flow cytometry according to the supplier's recommendations. Briefly, positively SSEA1 selected population was diluted in 100 µl of MACS buffer and incubated with 10 µl of anti-SSEA1/phycoerythrin (PE)-conjugated antibody (130-091-375, MiltenyiBiotec Inc., UK) for 20 minutes in the dark (refrigerator). This antibody can selectively bind to SSEA1 marker on the cell surface, and fluorescent dye conjugated to the antibody will tag SSEA1 positive cell. Cells were then centrifuged, washed and re-suspended in PBS just before analysis.

Experiment 2: isolation of MVH⁺ cells by MACS

The pellet of ovarian cells was re-suspended and incubated with polyclonal rabbit anti-mouse MVH (ab13840, Abcam, Cambridge, UK) and subsequently by goat anti-rabbit IgG magnetic beads (130-048-602, MiltenyiBiotec Inc., UK). The mixture of cells and magnetic beads was placed on the magnetic bead separator, while separation was performed following the manufacturer's instructions and as described in experiment 1. Isolated cells were cultured on mitotically inactivated MEF in 4 -well plates at 37°C in a 5% CO₂ atmosphere.

Experiment 3: isolation based on morphology selection after pre-plating

The pre-plate technique is based on the differential adherence characteristics of primary culture cells to a gelatin-coated surface. The pellet was re-suspended in culture medium and subsequently pre-cultured onto a 60×15 mm gelatinized culture dish. As Gong et al. (10) stated, due to the different adherence rates, the somatic cells attached quickly to the bottom of the dishes and the supernatant was withdrawn after 45

minutes. Cells were re-plated onto a mitotically inactivated MEF monolayer in a 35 mm dish. The cultures were passaged 2 times before they were subjected in characterization.

Culture of ovarian cell

Ovarian cells obtained from 3 mentioned experiments were cultured at a density of 2×10^3 ml⁻¹ on MEF feeders in culture medium. The culture medium was α -Minimum essential medium (α -MEM) containing 0.1 mM β -mercaptoethanol, 10% FBS, 1% nonessential amino acids (Gibco, USA), 1 mM sodium pyruvate, 1% lyophilized mixture of penicillin and streptomycin (Gibco, USA), 1000 units/mL mouse leukemia inhibitory factor (LIF), 2 mM L-glutamine, 10 ng/ml epidermal growth factor (EGF), 50 ng/ml human glial cell line-derived neurotrophic factor (GDNF) (R&D, UK), and 1ng/ml human basic fibroblast growth factor (bFGF) (BD Biosciences, UK) at 37°C in a 5% CO₂ atmosphere. After 7-10 days, colonies were mechanically split 1:2 and placed on a new prepared MEF monolayer. The medium was changed every other day and cultures were passaged every week.

Characterization of FGSCs

Analysis of transcription markers, including Nanog, C-kit, Oct-4, Fragilis, Mvh, Dazl, Zp3 and Scp3, expression levels by reverse transcription-polymerase chain reaction (RT-PCR)

A total of 15-20 colonies were picked up mechanically and total RNA was extracted from each sample using RNX-Plus™ kit (RN7713C, CinnaGenCo., Iran) according to the manufacturer's recommendations. cDNA was synthesized using PrimeScript™ RT reagent kit by the manufacturer's protocol (TaKaRa, Japan) and the PCR was performed with HotStarTag DNA Polymerase (Qiagen, Germany) for each primer (Table 1). General reaction conditions were 95°C for 5 minutes followed by 35 cycles at 95°C for 45 seconds, the appropriate annealing temperature for 30 seconds, elongation by heating at 72°C for 35 seconds and a final extension at 72°C for 10 minutes. The *Gapdh* gene was used as expression control and a non-template control (No RT, without cDNA) was included in each run.

Table 1: Primers for determination of mice markers using reverse transcription-polymerase chain reaction (RT-PCR)

Gene	Primer sequence (5' - 3')	Product size (bp)	Accession number
<i>c-Kit</i>	F: CTCACATAGCAGGGAGCACA R: ACAACTCACCCACACGCATA	123	NM_001122733.1
<i>Nanog</i>	F: CTGCTCCGCTCCATAACTTC R: GCTTCCAAATTCACCTCCAA	97	NM_028016.2
<i>Fragilis</i>	F: AGCCTATGCCTACTCCGTGA R: GAGGACCAAGGTGCTGATGT	112	NM_025378.2
<i>Oct4</i>	F: GTTCTCTTTGGAAAGGTG R: GCATATCTCCTGAAGGTT	147	NM_001252452.1
<i>Mvh</i>	F: GCTCAAACAGGGTCTGGGAAG R: GCTTGATCAGTTCTCGAG	145	NM_010029.2
<i>Scp3</i>	F: CCGCTGAGCAAACATCTAAAGATG R: GGAGCCTTTTCATCAGCAACAT	161	NM_011517.2
<i>Dazl</i>	F: AAGGCAAAAATCATGCCAAAC R: TCCTGATTTTCGGTTTCATCC	72	NM_010021.4
<i>Zp3</i>	F: TAACCGTGTGGAGGTACCCA R: CAGGCGAAGAGAGAAAGCCA	136	NM_011776.1
<i>Gapdh</i>	F: ACACCCACTCCTCCACCTTTG R: TCCACCACCCTGTTGCTGTAG	112	NM_002046.4

Immunocytochemistry assay of OCT-4 and MVH markers in the ovarian cell culture

Immunocytochemistry was performed to determine whether these ovarian cells express FGSC markers, OCT-4 and MVH. OCT-4 is a pluripotency and early germ cell development marker (16) and MVH is a germ-line marker (17, 18). The colonies grown on the glass slides were stained. Briefly, cells were fixed by paraformaldehyde 4% for 15 minutes at room temperature (RT) and then permeabilized with 0.1% triton-X for 15 minutes at RT. Cells were washed and blocked in 10% normal goat serum in PBS at RT for 60 minutes and incubated overnight at 4°C with primary antibodies of MVH (Dilution: 1: 100; Ab13840) and OCT4 (Dilution: 1: 200; Ab18976) that were diluted in blocking solution. For negative control, the

primary antibody was omitted. After washing with PBS, cells were incubated with secondary antibody (Ab 6717) for 1 hour at RT. Then culture was incubated with 4', 6-diamidino-2-phenylindole (DAPI, D8417) for 10 minutes at RT. Images were captured using a fluorescent microscope.

Alkaline phosphatase (AP) activity analysis

For assessing the AP-activity, the cells were fixed with 4% paraformaldehyde and stained histochemically using an AP-staining kit (F4523) following the manufacturer's protocol.

Statistical analysis

Each experiment was repeated at least five times. Statistical analysis after flow cytometry was performed using the Statistical Package for the Social

Sciences (SPSS, SPSS Inc., Chicago, IL, USA) version 16.0 and the significance was attributed at $p \leq 0.05$.

Results

Experiment 1

As a result of first experiment, positive selection of female germ line stem cell by MACS did not increase

the percentage of these cells as it was shown by the number of colonies formed after culture *in vitro* and flow cytometry. Isolated cells could form 1-2 colonies per well after subsequent culture on MEF feeder layer. Flow cytometry was used to analyze the relative number of SSEA1+ PE-labeled cells in magnetic fraction obtained (Fig 1). The sorted cell fractions contained about $1.98 \pm 0.49\%$ (Mean \pm SDV) PE-positive cells in flow cytometry analysis.

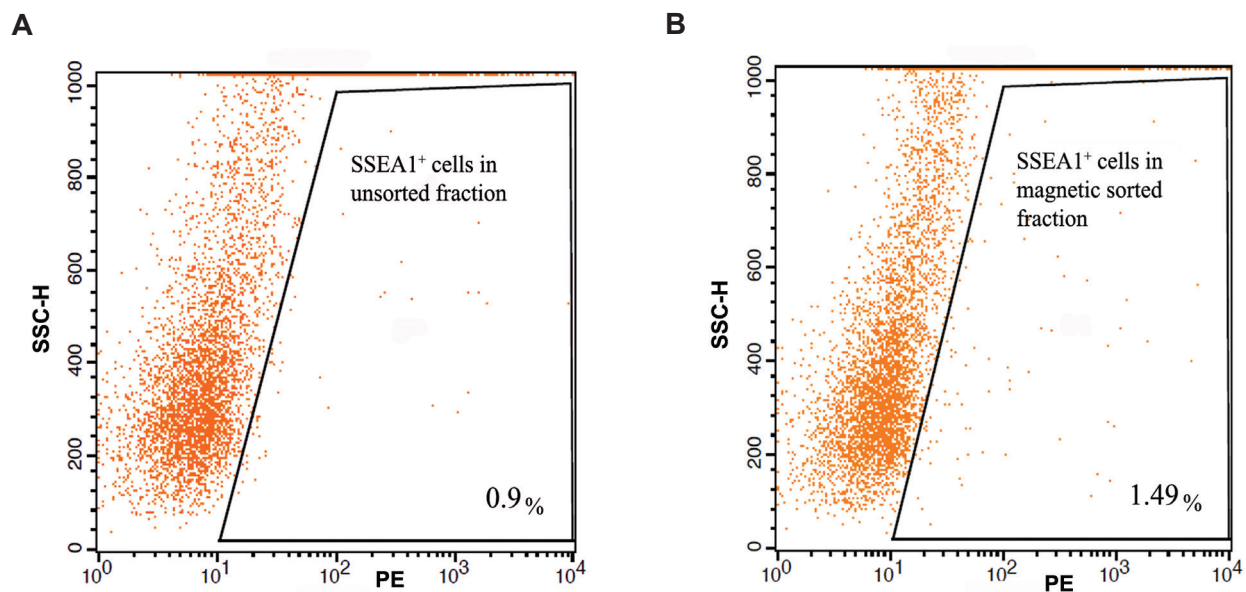


Fig 1: Flow cytometric analysis of PE signal after MACS of neonate ovarian cells using an SSEA1 antibody. Figures show the relative number of PE-labeled cells within unsorted (A) and magnetic sorted (B) fractions. The enrichment of PE-positive cells (conjugated with SSEA1 antibody) after MACS is ignorable. PE; Phycoerythrin, MACS; Magnetic activated cell sorting, SSEA1; Stage-specific embryonic antigen-1 and SSC-H; Side light scatter.

Experiment 2

After using MVH-magnetic bead sorting for the enrichment of FGSCs, isolated cells could form some colonies after subsequent culture on MEF feeder layer. The number of colonies was obviously lower than that in pre-plating experiment (again 1-2 colonies per well in 4-well plates). The advantage of this experiment was reducing the number of fibroblast cells.

Experiment 3

As shown in figure 2, when pre-plating technique was used for enrichment of FGSCs, the

cells increased in number and formed 10-12 small colonies per 35 mm dish after one week of culture. Two markedly different forms of colonies were observed: type A, appeared after day 2 of culture and grown as large monolayer colonies (Fig 2A), while type B, appeared after 1 week of culture and grown as small compact colonies (Fig 2B, C). Latter colonies were successfully passaged mechanically in our laboratory. Based on our experiences, growth factors in the culture media seemed to be necessary as without them, colony formation was lower and cells began to die in a shorter time. It may show the importance of these growth factors in proliferation and self-renewal of FGSC. In this

experiment, after second passage, colonies in culture were picked up for characterizing assays.

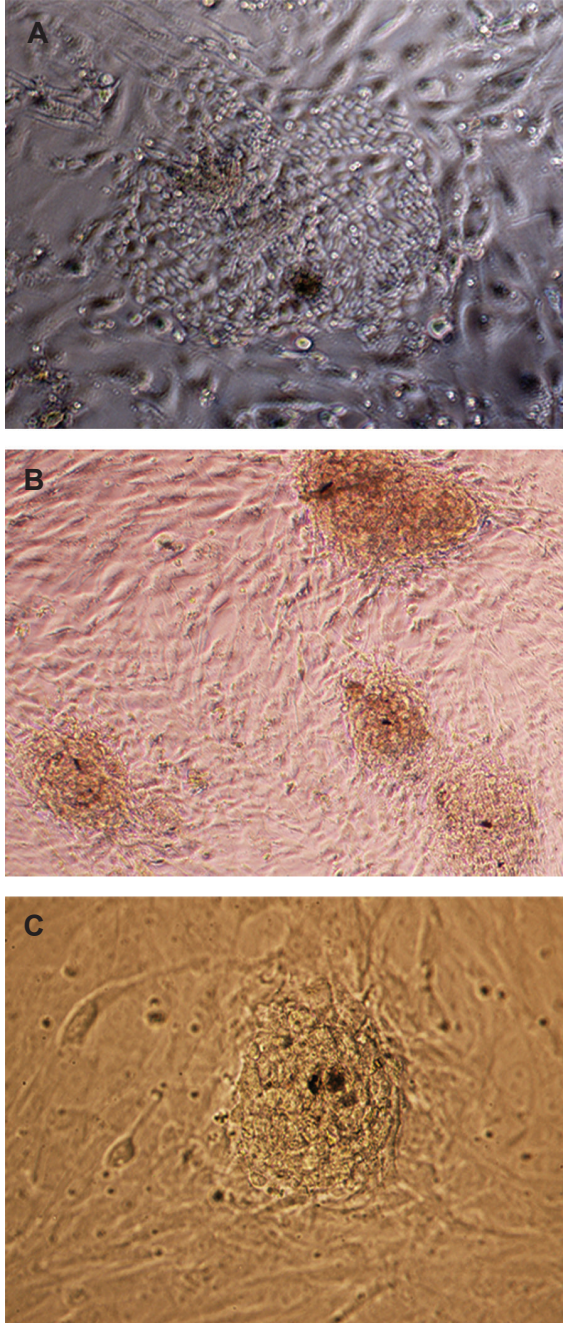


Fig 2: Morphology of colonies cultured after pre-plating technique. A. Loosely associated colonies observed on day 3 of culture that grown as loose monolayer cluster ($\times 20$). B, C. Tightly associated colonies at the end of first week [$\times 10$ (B) and $\times 20$ (C)].

Analysis of transcription markers by RT-PCR

RT-PCR was performed on extracted mRNA from mouse neonate ovary and the FGSC small colony (after passage 2). Ovaries and FGSC colonies were positive for mRNA expression of *Oct4*, *Nanog*, *C-kit*, *Mvh*, *Dazl* and *Fragilis*. As expected, no bands were detected for *Scp3* and *Zp3* in FGSC colonies, suggesting that these colonies failed to enter to meiosis (Fig 3).

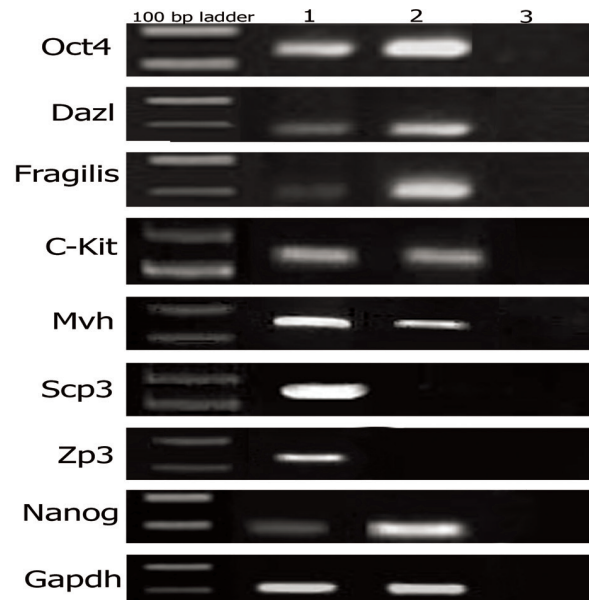


Fig 3: RT-PCR analysis of expression of C-kit, Nanog, Oct4, Fragilis, Dazl, Mvh, Scp3 and Zp3 in ovary (lane 1), FGSCs (lane 2) and no RT-PCR analysis (lane 3). Gapdh mRNA expression was used as an internal control.

FGSCs; Female germ-line stem cells.

Characterization of ovarian FGSCs by immunocytochemistry

Immunocytochemical staining with anti-MVH and anti-OCT4 antibodies further confirmed that cells within the colonies are expressing FGSC proteins (Fig 4).

AP activity

Compact colonies formed in culture were positive for AP activity (Fig 5). As seen, the staining intensity was variable. Some of them had strong reaction, like embryonic stem cells, whereas some of them had weak reaction. High levels of AP activity were associated with multicellular colonies in culture.

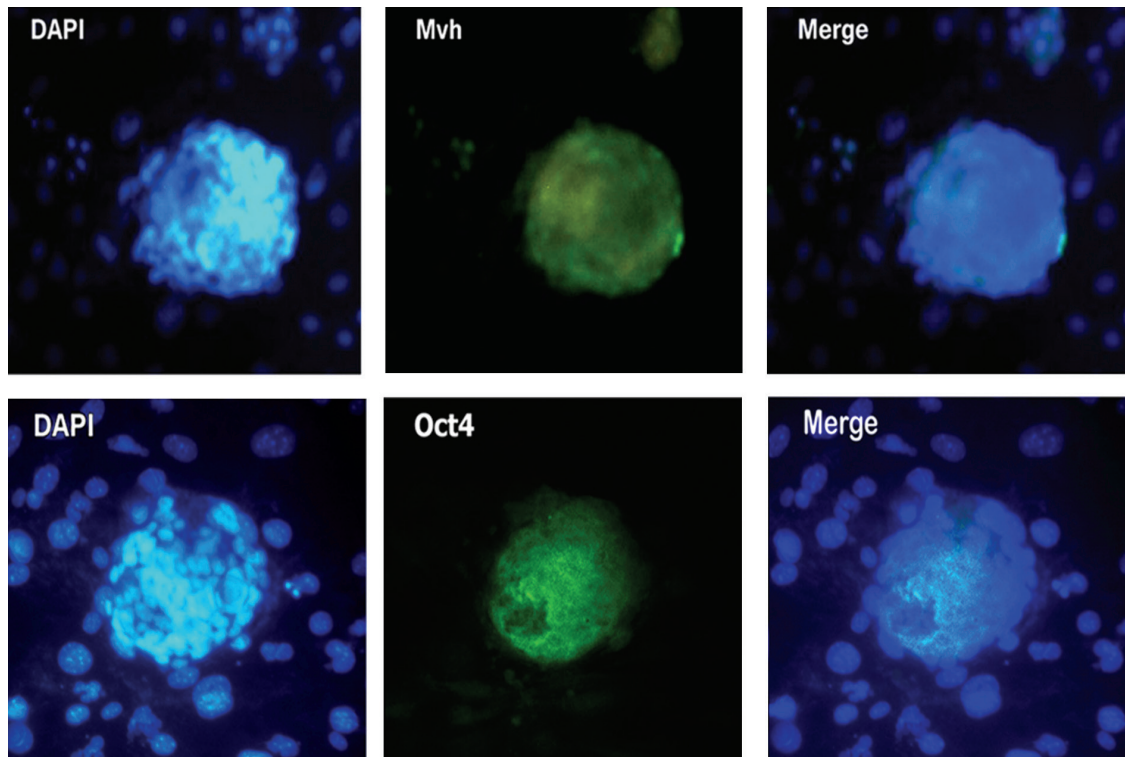


Fig 4: Immunocytochemistry of FGSCs colonies using antibodies (FITC-conjugated secondary antibody, green) against the germ-line markers MVH (top) and OCT4 (bottom). Nuclei were stained with DAPI. As shown by fluorescence microscopy, FGSCs expressed the markers MVH and OCT4 ($\times 20$).
 FGSCs; Female germ-line stem cells, FITC; Fluorescein isothiocyanate, MVH; Mouse vasa homolog and DAPI; 4', 6-diamidino-2-phenylindole.

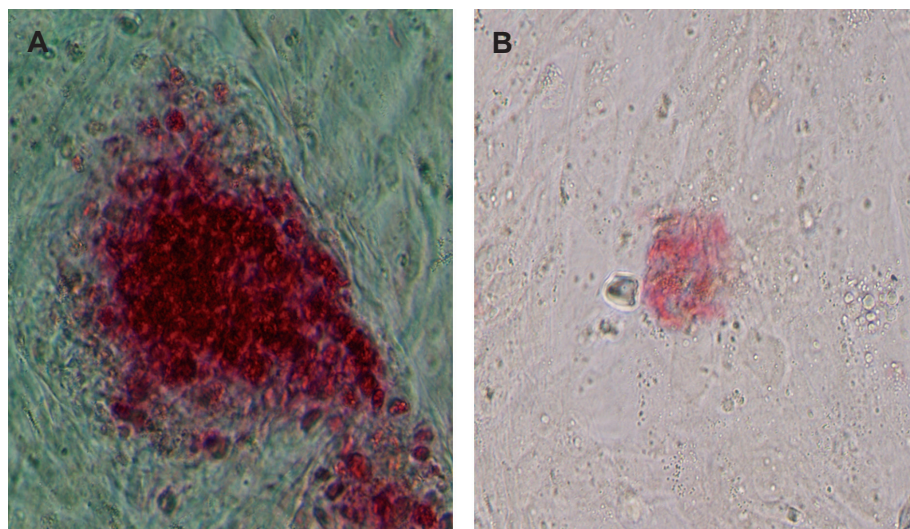


Fig 5: AP-positive cells (red) after second passage. Note that levels of staining intensity within culture are from strong in A ($\times 20$) to weak reaction in B ($\times 20$).
 AP; Alkaline phosphatase.

Discussion

The present study compared three procedures for enriching FGSCs from digested ovarian tissues. By culturing ovarian cells, we could demonstrate that 2 distinct types of colonies will form which are distinguished based on their morphology (Fig 2). The first type appeared around day 2 and grown as monolayer cluster. Although RT-PCR showed that they express *Oct4* slightly, they did not react in AP staining and also did not express germ cell markers (data not shown). The morphology was similar to what Gong et al. (10) reported as follicular cells. They showed that these cells have strong reactivity with anti-mullerian hormone (AMH) that is an ovarian follicular somatic cell marker. We observed the second type of cells as compact colonies after 1 week of culture of ovarian cells. RT-PCR showed that the cells express *Oct4*, *Nanog*, *Mvh* (pluripotent gene transcripts), *Dazl*, *Fragilis* (germ cell markers), *c-kit* (stem cell factor receptor), but did not express *Scp3* and *ZP3*. Expression presented here was consistent with Zou et al. (6) who isolated stem cells that were positive for germ cell markers. However colony forming cells in their study were not expressing *Nanog* and *c-kit*. It has been found that *c-kit* is involved in survival and proliferation of migrating mouse PGC that is found in early germ cells and in most stem cells (19). Gong et al. (10) have reported embryonic stem (ES) cell-like colonies by co-culture of ovarian cells on an inactivated MEF monolayer that were expressing ES genes (showed in RT-PCR and immunostaining) but not markers of germ line (*Mvh* and *Fragilis*) after immunostaining. In our study, *Mvh* gene was expressed at the levels of RNA (after RT-PCR) and protein (after immunostaining). In addition, these compact colonies in our study were positive for AP. Evidence of AP expression in these cells suggests that they are not undergoing meiosis (19, 20). Collectively, expressing PGC markers show that cells are probably in a transitional stage of their development from ES cells (from unknown source), or they are some PGC derived stem cells. De Felici suggested that probably a small number of PGC/oogonia or PGC derived undifferentiated cells with germ stem cell (GSC) characteristics remains in the post-natal and adult ovary and under certain

conditions may resume mitosis, enter meiosis and give rise to oocytes (12). Parte et al. (21) stated that the main advantage of being in quiescent nature is protection from accumulation of chromosomal aberrations associated with the process of aging.

Attempts to enrich MVH⁺ cells and SSEA1⁺ cells in our study by MACS were unsuccessful. The possibility cannot be excluded that the enzymatic digestion during preparation of the single-cell suspension changes epitopes at the outer plasma membrane (22), or primary antibody is unable to detect receptor protein on the surface of germ cell, especially about MVH receptor that is widely considered to be a cytoplasmic protein. However, stem cell colonies formed in culture after pre-plating were labeled for MVH after immunostaining, ensuring cytoplasmic expression of this marker. It has been stated that MVH is a general germ cell marker and does not enrich germ line stem cells in the ovary (7). So immunomagnetic separation may not be as efficient and needs negative enrichment of target cells by depleting non-target cells (23, 24), while should be consider for FGSC in ovary. It can also cause problems if the cell type of interest does not have unique markers. It has been shown that MVH in ovary is expressed in the germ cells with different developmental stages, while making the isolation of a homogeneous population difficult (7, 24). FGSC separation is a new established field and there are challenges and difficulties to overcome. The detailed knowledge of the biology of FGSCs and the potential techniques is necessary to select the correct methodology to yield the desired cell population. It is noteworthy to mention that it would be expensive doing FACS and MACS with special antibody to have $1.5 \pm 0.2\%$ (with MVH antibody in adult mice) (25) or $1.98 \pm 0.49\%$ (with SSEA1 antibody in neonate mice in our study) positive cells in sorted population. This purity is low when compared with the sorted equivalent male population (22). Some Studies have reported *in vitro* differentiation of mouse ESCs into germ cell and presumptive oocytes (26, 27). These finding show that embryonic cells can enter in meiotic process and may give rise to gametes. However, it seems that *in vivo* gametogenesis and final maturation with oocyte production is happening in a complex niche that is controlled by signals from somatic cells (28). Some studies have demonstrated that proliferative capacity of stem

cells to respond to signal diminish with advancing age (29, 30). This delicate network remains to be determined. Further investigation should be focused in improving stem cell isolation methods from ovary in order to be used in *in vitro* fertilization (IVF) clinic for subsequent differentiation and also in regenerative medicine by determining what is happening in the ovarian complex network. This will provide information in rejuvenating of ovary to a younger state and improvements in health and well-being in aging females.

Conclusion

Pre-plating purification is easy and efficient, while does not require special equipment. Such a simple manipulation promise is important for designing strategies to maximize isolation and enrichment of FGSCs.

Acknowledgments

This project was financially supported by research deputy of Tehran University of Medical Sciences and Health Services Grant No. 10461. The authors would like to thank Dr. Soraya Parvari for her helpful technical assistance. The authors have no conflict of interest in this article.

References

- Zuckerman S. The number of oocytes in the mature ovary. *Recent Prog Horm Res.* 1951; 6: 63-109.
- Saffman EE, Lasko P. Germline development in vertebrates and invertebrates. *Cell Mol Life Sci.* 1999; 55(8-9): 1141-1163.
- Tilly JL. Commuting the death sentence: how oocytes strive to survive. *Nat Rev Mol Cell Biol.* 2001; 2(11): 838-848.
- Johnson J, Bagley J, Skaznik-Wikiel M, Lee HJ, Adams GB, Niikura Y, et al. Oocyte generation in adult mammalian ovaries by putative germ cells in bone marrow and peripheral blood. *Cell.* 2005; 122(2): 303-315.
- Johnson J, Canning J, Kaneko T, Pru JK, Tilly JL. Germline stem cells and follicular renewal in the postnatal mammalian ovary. *Nature.* 2004; 428(6979): 145-150.
- Zou K, Yuan Z, Yang Z, Luo H, Sun K, Zhou L, et al. Production of offspring from a germline stem cell line derived from neonatal ovaries. *Nat Cell Biol.* 2009; 11(5): 631-636.
- Pacchiarotti J, Maki C, Ramos T, Marh J, Howerton K, Wong J, et al. Differentiation potential of germ line stem cells derived from the postnatal mouse ovary. *Differentiation.* 2010; 79(3): 159-170.
- White YA, Woods DC, Takai Y, Ishihara O, Seki H, Tilly JL. Oocyte formation by mitotically active germ cells purified from ovaries of reproductive-age women. *Nat Med.* 2012; 18(3): 413-421.
- Tilly JL, Telfer EE. Purification of germline stem cells from adult mammalian ovaries: a step closer towards control of the female biological clock?. *Mol Hum Reprod.* 2009; 15(7): 393-398.
- Gong SP, Lee ST, Lee EJ, Kim DY, Lee G, Chi SG, et al. Embryonic stem cell-like cells established by culture of adult ovarian cells in mice. *Fertil Steril.* 2010; 93(8): 2594-2601.
- Guan K, Wolf F, Becker A, Engel W, Nayernia K, Hasenfuss G. Isolation and cultivation of stem cells from adult mouse testes. *Nat Protoc.* 2009; 4(2): 143-154.
- De Felici M. Germ stem cells in the mammalian adult ovary: considerations by a fan of the primordial germ cells. *Mol Hum Reprod.* 2010; 16(9): 632-636.
- Johnson J, Canning J, Kaneko T, Pru JK, Tilly JL. Germline stem cells and follicular renewal in the postnatal mammalian ovary. *Nature.* 2004; 428(6979): 145-150.
- Marani E, Van Oers JW, Tetteroo PA, Poelmann RE, van der Veecken J, Deenen MG. Stage specific embryonic carbohydrate surface antigens of primordial germ cells in mouse embryos: FAL (S.S.E.A.-1) and globoside (S.S.E.A.-3). *Acta Morphol Neerl Scand.* 1986; 24(2): 103-110.
- Fox N, Damjanov I, Martinez-Hernandez A, Knowles BB, Solter D. Immunohistochemical localization of the early embryonic antigen (SSEA-1) in postimplantation mouse embryos and fetal and adult tissues. *Dev Biol.* 1981; 83(2): 391-398.
- Pesce M, Wang X, Wolgemuth DJ, Scholer H. Differential expression of the Oct-4 transcription factor during mouse germ cell differentiation. *Mech Dev.* 1998; 71(1-2): 89-98.
- Fujiwara H, Fukuoka M, Yasuda K, Ueda M, Imai K, Goto Y, et al. Cytokines stimulate dipeptidyl peptidase-IV expression on human luteinizing granulosa cells. *J Clin Endocrinol Metab.* 1994; 79(4): 1007-1011.
- Noce T, Okamoto-Ito S, Tsunekawa N. Vasa homolog genes in mammalian germ cell development. *Cell Struct Funct.* 2001; 26(3): 131-136.
- Kerr CL, Hill CM, Blumenthal PD, Gearhart JD. Expression of pluripotent stem cell markers in the human fetal ovary. *Hum Reprod.* 2008; 23(3): 589-599.
- Makabe S, Naguro T, Nottola SA, Pereda J, Motta PM. Migration of germ cells, development of the ovary, and folliculogenesis. In: Familiari G, Makabe S, Motta P, editors. *Ultrastructure of the ovary.* 1st ed. Japan: Springer US; 1991; 1-27.
- Parte S, Bhartiya D, Telang J, Daithankar V, Salvi V, Zaveri K, et al. Detection, characterization, and spontaneous differentiation in vitro of very small embryonic-like putative stem cells in adult mammalian ovary. *Stem Cells Dev.* 2011; 20(8): 1451-1464.
- von Schonfeldt V, Krishnamurthy H, Foppiani L, Schlatt S. Magnetic cell sorting is a fast and effective method of enriching viable spermatogonia from djungarian hamster, mouse, and marmoset monkey testes. *Biol Reprod.* 1999; 61(3): 582-589.
- McCloskey KE, Moore LR, Hoyos M, Rodriguez A, Chalmers JJ, Zborowski M. Magnetophoretic cell sorting is a function of antibody binding capacity. *Biotechnol Prog.* 2003; 19(3): 899-907.
- Tomlinson MJ, Tomlinson S, Yang XB, Kirkham J. Cell separation: terminology and practical considerations. *J Tissue Eng.* 2013; 4: 2041731412472690.
- Woods DC, Tilly JL. Isolation, characterization and propagation of mitotically active germ cells from adult mouse and human ovaries. *Nat Protoc.* 2013; 8(5): 966-988.
- Lacham-Kaplan O, Chy H, Trounson A. Testicular cell conditioned medium supports differentiation of embryonic stem cells into ovarian structures containing oocytes. *Stem Cells.* 2006; 24(2): 266-273.
- Hubner K, Fuhrmann G, Christenson LK, Kehler J, Rein-

Enriching of Female Germ Line Stem Cell

- bold R, De La Fuente R, et al. Derivation of oocytes from mouse embryonic stem cells. *Science*. 2003; 300(5623): 1251-1256.
28. Oktem O, Oktay K. Current knowledge in the renewal capability of germ cells in the adult ovary. *Birth Defects Res C Embryo Today*. 2009; 87(1): 90-95.
29. Oktem O, Oktay K. A novel ovarian xenografting model to characterize the impact of chemotherapy agents on human primordial follicle reserve. *Cancer Res*. 2007; 67(21): 10159-10162.
30. Quarto R, Thomas D, Liang CT. Bone progenitor cell deficits and the age-associated decline in bone repair capacity. *Calcif Tissue Int*. 1995; 56(2): 123-129.
-