

Supplementary Information for

Hsa circ 0006427 Suppresses Multiplication, Migration and Invasion of Non-Small Cell Lung Cancer Cells through miR-346/VGLL4 Pathway

Jiacheng Sun, M.D.¹, Lei Wang, M.D.², Xinhai Zhu, M.M.^{3*}, Molei Shen, M.D.^{1*}

1. Department of Thoracic Surgery, Pinghu First People's Hospital, Pinghu City, Jiaxing, Zhejiang, China

2. Department of Anesthesiology, Pinghu First People's Hospital, Pinghu City, Jiaxing, Zhejiang, China

3. Department of Thoracic Surgery, Zhejiang Hospital, Xihu District, Hangzhou, Zhejiang, China

*Corresponding Addresses: Department of Thoracic Surgery, Zhejiang Hospital, Xihu District, Hangzhou, Zhejiang, China

Department of Thoracic Surgery, Pinghu First People's Hospital, Pinghu City, Jiaxing, Zhejiang, China

Emails: dr-zxh@163.com, dutangxi661@163.com

Table S1: Correlation of circ_0006427 expression with clinicopathological variables in 50 cases of NSCLC

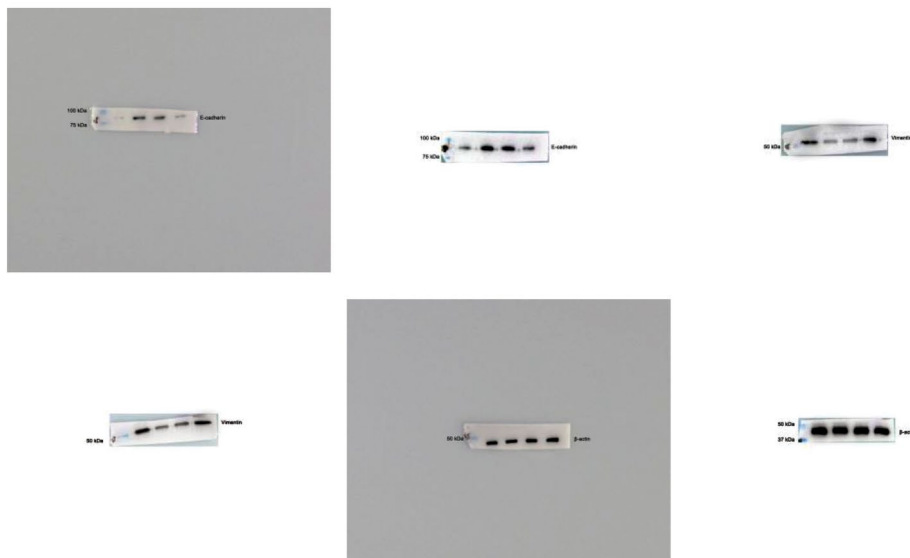
Characteristics	All case (n=50)	circ_0006427 expression		χ^2	P value
		Low	High		
Gender					
Male	27	12	15	0.7246	0.3946
Female	23	13	10		
Age (Y)					
≤60	21	11	10	0.0821	0.7745
>60	29	14	15		
Lymphatic metastasis					
Negative	18	5	13	5.5556	0.0184*
Positive	32	20	12		
Histological classification					
Squamous cell carcinoma	16	10	6	1.4706	0.2253
Adenocarcinoma	34	15	19		
Tumor size (cm)					
<3	20	6	14	5.3333	0.0209*
≥3	30	19	11		
Smoking history					
Yes	22	10	12	0.3247	0.5688
No	28	15	13		
Histological grade					
High	35	16	19	0.8571	0.3545
Moderate or low	15	9	6		

NSCLC; Non-small cell lung cancer and *, P<0.05.

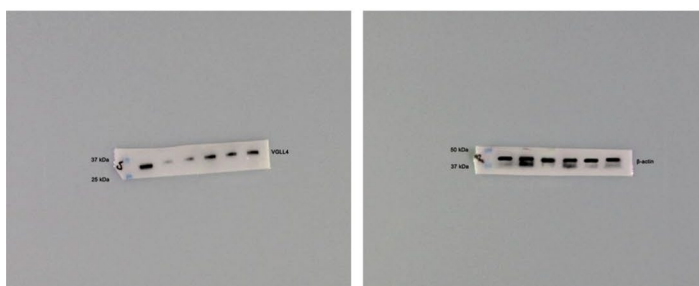
2G



4E



5C



d

5J



6D



Fig.S1: The original image of Western blot assay.