

Comparative Study of The Effect of LPS on The Function of BALB/c and C57BL/6 Peritoneal Macrophages

Sara Soudi, M.Sc.¹, Ahmad Zavarani-Hosseini, Ph.D.^{1*}, Zuhair Muhammad Hassan, Ph.D.¹, Masoud Soleimani, Ph.D.², Fatemeh Jamshidi Adegani, M.Sc.³, Seyed Mahmoud Hashemi, M.Sc.^{1,3}

1. Department of Immunology, Faculty of Medical Sciences, Tarbiat Modares University, Tehran, Iran

2. Department of Hematology, Faculty of Medical Sciences, Tarbiat Modares University, Tehran, Iran

3. Department of Stem Cell Biology, Stem Cell Technology Research Center, Tehran, Iran

* Corresponding Address: P.O. Box: 14115-331, Department of Immunology, Faculty of Medical Sciences, Tarbiat Modares University, Tehran, Iran

Email: zavarana@modares.ac.ir

Received: 30/Jun/2012, Accepted: 25/Sep/2012

Abstract

Objective: Macrophages influence their environment and surrounding immune cells as soon as stimulators affect them. Different sources of macrophages induce different reactions in their neighboring immune cells, which result in non-uniform immunologic outcomes. In this experimental research, we compare the behavior of peritoneal macrophages to lipopolysaccharide (LPS) stimulation from BALB/c mice as an indicator of a type 2 immune response and from C57BL/6 mice as an indicator of a type 1 immune response.

Materials and Methods: In this experimental study, peritoneal macrophages prepared from thioglycolate stimulated BALB/c and C57BL/6 mice were treated with 1 µg/ml LPS. At different time points after LPS treatment, nitric oxide (NO), interferon gamma (IFN-γ), interleukin 4 (IL-4), transforming growth factor β₁ (TGF-β₁), interleukin 17 (IL-17), and interleukin 10 (IL-10) production were measured in the supernatants of all macrophage cultures. Indoleamine 2, 3 dioxygenase (IDO) and phagocytic activity were analyzed in the different experimental groups. The supernatant effects of LPS-treated macrophages on splenocyte proliferation was assessed by the colorimetric method using a 3-(4,5-Dimethylthiazol-2-yl)-2, 5-diphenyltetrazolium bromide (MTT) reagent.

Results: According to cytokine analysis, different mouse strains show different cytokine patterns in response to LPS. C57BL/6 macrophages produced more IL-17, IL-10, and IFN-γ, while BALB/c macrophages produced more TGF-β₁ and IL-4. There was no significant difference in IDO activity between strains (p ≤ 0.05). BALB/c mice produced more NO in the first 24 hours after LPS treatment, but C57BL/6 produced more NO at 72 hours post-LPS treatment. Macrophages from both strains had a suppressor effect on splenocyte proliferation, but this effect was stronger in BALB/c mice.

Conclusion: The results show that macrophages from different genetic backgrounds respond differently to the same stimulus in aspects of type, intensity, and time of response. The consideration of these aspects will enable researchers to use correct treatment programs for immune-regulation or immunotherapy.

Keywords: Macrophage, Thioglycolate, LPS, BALB/c, C57BL/6

Cell Journal (Yakhteh), Vol 15, No 1, Spring 2013, Pages: 45-54

Citation: Soudi S, Zavarani-Hosseini A, Muhammad Hassan Z, Soleimani M, Jamshidi Adegani F, Hashemi SM. Comparative study of the effect of LPS on the function of BALB/c and C57BL/6 peritoneal macrophage. *cell J.* 2013; 15(1): 45-54.

Introduction

Macrophages are major responders of innate immunity by expression of innate immunity recep-

tors and their ability to sense host and pathogen-derived factors (1, 2). Macrophages are phagocytic cells that act both as a host for immune evasion of

intra-cellular pathogens and as promoters to prime a specific immune response by antigen presentation and secretion of pro-inflammatory cytokines and chemokines (3). Experimental studies show that the early immune responses appearing after a pathogenic challenge determine the polarization of T cell responses and disease outcome. Different early immune responses mediated with the help of macrophages assist with induction of cellular immunity and the control of immune homeostasis (4). In every immune stimulation or infection, a heterogeneous population of macrophages will activate and produce pro-inflammatory to anti-inflammatory responses, depending on the nature of the stimulators and the induced signaling pathways. Evidence shows that macrophages from Th₁ strains (C57BL/6) or Th₂ strains (BALB/c) of mice are activated in different ways in response to the same stimuli, guiding the immune responses in opposing directions (4, 5). According to this functional diversity, macrophages can be divided into distinct groups, M-1 and M-2 that influence the formation of Th₁/Th₂ and other inflammatory responses (4, 5). Because of the variety in macrophage function of different strains, and the key role of macrophages in infections and inflammatory disease, targeted studies should be designed to clarify the role of macrophages under different conditions. The obtained results will create a helpful map for better manipulation of macrophages by using suitable treatments or stimuli.

Much of the current knowledge on the function of macrophages in response to immunomodulators has been derived from the analysis of the RAW 264.7 cell line. This cell line has been established from the ascites of tumor-induced BALB/c mice (6, 7). However these results are not extendable to those macrophages that have been separated from distinct anatomical parts of the body, and therefore have different characteristics. Splenic, alveolar, or peritoneal macrophages are examples of distinct anatomic macrophage sources (8, 9). Researchers have shown that large peritoneal macrophages (LPMs) and small peritoneal macrophages (SPMs) are two developmentally and functionally distinct macrophage subsets that respond differently to typical stimuli, such as lipopolysaccharides (LPS) (9). LPS is a pathogen-specific molecular motif that, after interaction with toll-like receptor-4 (TLR-4) on macrophages, induces macrophage migration to the infected site through actin reassembly (10).

Following genetic reprogramming in activated macrophages the expression of TLR-4 mediated signaling genes is up-regulated that terminated to the activation of nuclear factor κ B (NF κ B), mitogen activated protein kinases (MAP kinases), and finally the expression of pro-inflammatory cytokine genes (1, 6, 11).

The goal of our study was to compare peritoneal macrophage responses to LPS stimulation from two different genetic backgrounds over a determined period of time. Thioglycolate stimulation was used to induce inflammation and migration of blood monocytes to the peritoneal fluid (9). At different times after LPS treatment, we measured phagocytic activity, cytokine pattern,IDO activity, and nitric oxide (NO) production of the macrophages.

Materials and Methods

Mice

Six, eight-week-old female BALB/c and C57BL/6 mice were purchased from Pasteur Institute of Iran. Mice were used for splenocyte and peritoneal macrophage preparation. All animal experiments followed the guidelines of the Laboratory Animal Ethical Commission of Tarbiat Modares University.

Macrophage preparation

Peritoneal macrophages from BALB/c and C57BL/6 mice were obtained by the peritoneal lavage technique. Four days after peritoneal injection of 4% w/v thioglycolate medium (2 ml), mice were ethically sacrificed by CO₂ inhalation. A total of 8 ml of cold RPMI-1640, supplemented with 1% penicillin-streptomycin (Gibco, Grand Island, NY, USA) was injected into the peritoneal cavity in the lower abdominal area near the fat region. After needle withdrawal, mice were held by their tails and swished around to wash the peritoneal cavity. The needle was inserted into the upper part of the abdomen and peritoneal fluids were collected. The resultant cell suspension was centrifuged at 350×g for 5 minutes and adjusted to 1×10⁶ cells/ml in RPMI-1640 (Sigma-Aldrich, St. Louis, MO, USA) that contained 10% fetal bovine serum (FBS), 2 mM of 1% L-glutamine, 10 mM of 1% HEPES, and 1% penicillin-streptomycin (Gibco, Grand Island, NY, USA). Aliquots of each sample (200 μ l) were cultured in 4-well plates and incu-

bated at 37°C and 5% CO₂. After 6 hours, the cells were washed to separate out any nonadhesive cells. Macrophage purity was determined by flow-cytometry analysis for CD14⁺ and CD11b⁺ markers.

Lipopolysaccharide (LPS) treatment

For *in vitro* stimulation, we added LPS to a final concentration of 1 µg/ml to the macrophage cultures. This step was performed in triplicate. We assessed immunological parameters of the macrophage culture supernatants at 0 (just prior to LPS addition), and 3, 24, 48, and 72 hours post-LPS treatment. The immunomodulatory effect of the immune responses on splenocytes was measured by culturing the splenocytes in the supernatant of LPS-treated macrophages. The lack of LPS in the reagents and cell culture media was confirmed by the limulus amoebocyte lysate (LAL) test.

Cytokine measurement

Supernatants of the LPS-stimulated macrophages were collected at 0 (pre-treatment), and 3, 24, 48, and 72 hours post-LPS treatment. Supernatants from different experiments were stored at -20°C. The presence of interferon gamma (IFN-γ), interleukin 4 (IL-4), transforming growth factor β₁ (TGF-β₁), interleukin 17 (IL-17), and interleukin 10 (IL-10) cytokines were assessed using enzyme-linked immunosorbent assay (ELISA) kits from eBioscience, following the manufacturer's instructions. Each sample was dispensed in triplicate. The optical density of each well was determined at 450 nm. We used Microsoft Excel to draw standard curves and ELISA results.

Indoleamine 2, 3 dioxygenase (IDO) activity assay

Indoleamine 2, 3 dioxygenase (IDO) activity was determined by the colorimetric assay that measured the amount of kynurenine, the first stable catabolite downstream of the enzyme's activity. Briefly, 100 µl of 30% trichloroacetic acid was added to 200 µl culture supernatants of the control and test groups. After centrifugation at 8000×g, 75 µl of the supernatant from each sample was added to an equal volume of Ehrlich reagent (100 mg P-dimethylbenzaldehyde, 5 mL glacial acetic acid) in microliter 96-well plates,

in triplicate. Optical density was measured at 492 nm. We calculated the amount of kynurenine according to the standard curve of defined kynurenine concentration (0-100 µM).

Nitric oxide (NO) measurement

All supernatants from LPS-treated macrophages were collected and stored at -20°C. (This has already been mentioned. One should be deleted.) Nitrite was measured by addition of 100 µl of Griess reagent (1% sulphanilamide and 0.1% naphthylethylenediamine in 5% phosphoric acid; Sigma) to 100 µl of the supernatants. Optical density was read at 540 nm and NO concentration was determined by using the standard concentrations of sodium nitrite (0-100 µM).

Splenocyte proliferation assay

BALB/c×C57BL/6 hybrid mice (4) spleens were removed and homogenized in 2 ml cell culture media. After centrifugation, erythrocytes were lysed by lysis buffer that consisted of NH₄Cl (0.15 M), KHCO₃ (1.0 mM), and Na₂EDTA (0.1 mM). The splenocytes were washed three times in media and cultured in RPMI-1640 (Sigma-Aldrich, St. Louis, MO, USA) that contained 5% FBS, 1% L-glutamine (2 mM), 1% HEPES (10 mM), and 1% penicillin-streptomycin (Gibco, Grand Island, NY, USA). Splenocytes were counted and adjusted to 5×10⁵ cells/ml. A total of 50 µl of the cell suspension was co-cultured with 150 µl of the 0 (pre-treatment), and 3, 24, 48, and 72 hour LPS-treated macrophage supernatants. Each sample was tested in triplicate. After incubation for 7 hours at 37°C and 5% CO₂, 10 µl 3-(4, 5-Dimethylthiazol-2-yl)-2, 5-diphenyltetrazolium bromide (MTT; Sigma-Aldrich, St. Louis, MO, USA) was added to each well and the plates were incubated for an additional 6 hours (12). Formazan crystals were dissolved in 200 µl of dimethyl sulfoxide (DMSO; Sigma-Aldrich, St. Louis, MO, USA). Optical density was read at 540 nm on the plate reader using a reference wavelength of 630 nm. Cell count was determined according to standard curve.

Phagocytosis assay

Peritoneal macrophages from BALB/c and C57BL/6 mice were seeded at a concentration of 10×10⁴ cells/well in a 4-well plate. After 0 (pre-treatment), and 3, 24, 48, and 72 hours of LPS

treatment, cells were washed and 4', 6-diamidino-2-phenylindole (DAPI)-stained *Saccharomyces cerevisiae* were added at a ratio of 5:1 cells to each well. Cells were incubated for 1 hour at 37°C and 5% CO₂, then washed carefully to remove all yeast particles. Control and test samples were examined under an inverted fluorescence microscope. At least 200 cells were counted and the percent of infected cells and phagocytic index was reported.

Statistical analysis

Data analysis was performed with SPSS Statistical Package (SPSS Inc., Chicago, IL, USA) version 11.0. Differences between means were assessed for statistical differences using Mann-Whitney non-parametric assays and one-way analysis of variance (ANOVA). $P < 0.05$ was statistically significant. The results are shown as mean \pm standard deviation (SD).

Results

Flowcytometry

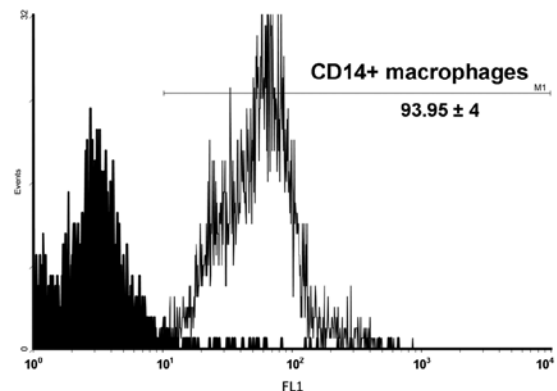
We used various samples of prepared peritoneal macrophages from BALB/c and C57BL/6 mice for the flowcytometry measurement of macrophage specific cell surface markers, CD14 and CD11b. As indicated in figure 1, the mean percentage of CD14 positive cells was 93.95 ± 4 , and the mean percentage of CD11b positive cells was 97.6 ± 1.15 .

Cytokine assay

To determine the nature of the immune responses of macrophages from BALB/c and C57BL/6 mice to LPS stimulation, we measured the amount of IFN- γ , IL-4, TGF- β_1 , IL-17, and IL-10 produced in the supernatant at 0 (pre-LPS treatment), and 3, 24, 48, and 72 hours post-LPS treatment. As shown in figure 2, TGF- β_1 production increased significantly ($p \leq 0.05$) in BALB/c macrophages compared to C57BL/6 macrophages in response to LPS. Cytokine analysis showed that IL-17 production was induced in both mice groups after LPS stimulation, but the production level of C57BL/6 macrophages was significantly higher than the production level of BALB/c macrophages at 0 (pre-stimulation), and 3, 24, and 48 hours post-stimulation. A significant increase in IL-17 pro-

duction occurred at 3 hours post-LPS treatment in C57BL/6 macrophages, but it occurred later in BALB/c macrophages (48 hours). According to figure 2, IL-10 production was induced in both groups of mice; however, it was significantly higher in C57BL/6 macrophages compared to BALB/c macrophages at 3 and 48 hours post-stimulation. A significant increase in IL-10 production occurred at 3 hours post-LPS treatment in C57BL/6 macrophages; however, this occurred later in BALB/c macrophages (24 hours). A small increase (about 2 pg) in IL-4 production was detected after LPS stimulation, which was significantly higher in BALB/c macrophages compared to C57BL/6 macrophages at 72 hours post-treatment. IFN- γ production increased significantly in C57BL/6 macrophages compared to BALB/c macrophages at 3, 24, 48 and 72 hours post-LPS treatment.

A



B

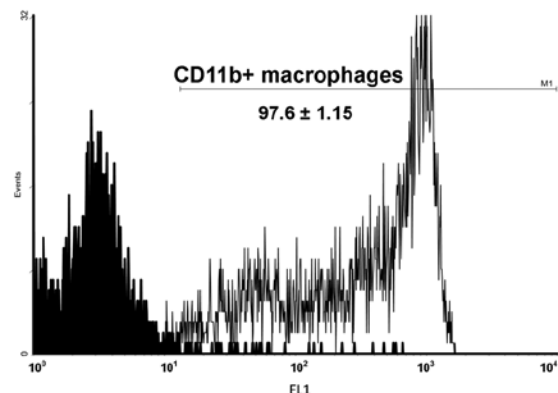


Fig 1: Flow cytometry analysis of peritoneal macrophages for CD11b and CD14 markers. Data shows the average number of positive cells for five mice per experimental group \pm standard deviation.

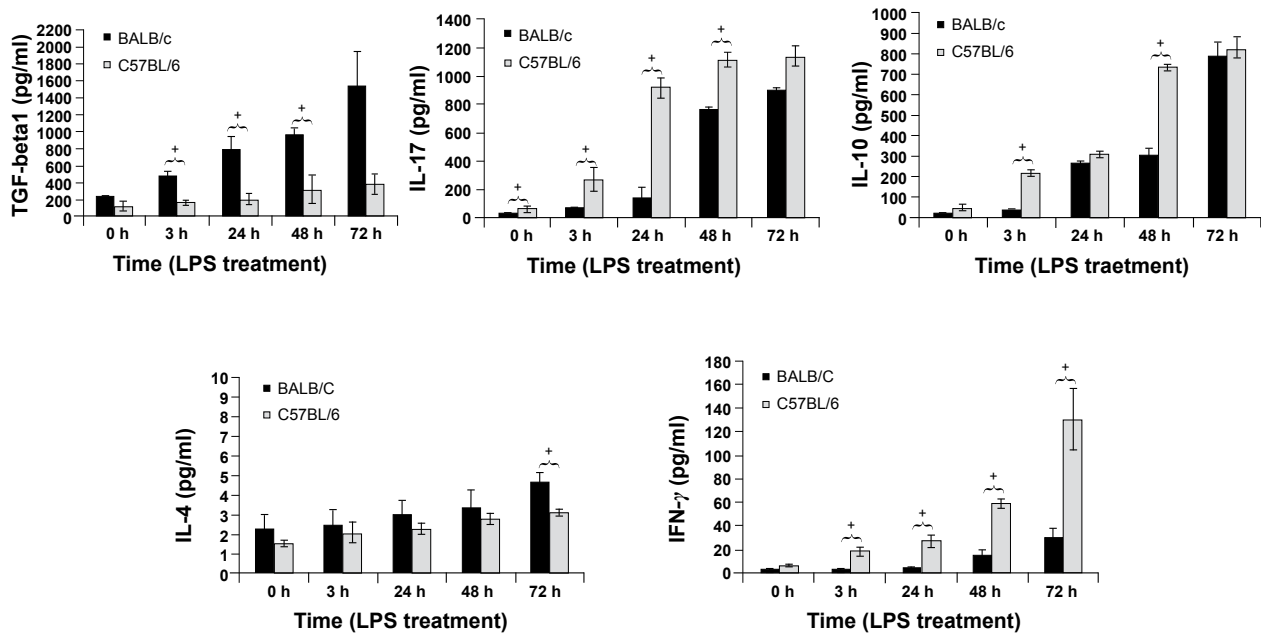


Fig 2: TGF-β, IL-17, IL-10, IL-4, and IFN-γ production by LPS-stimulated BALB/c and C57BL/6 macrophages at 0 (pre-treatment), and 3, 24, 48, and 72 hours post-LPS treatment. The results represent the mean cytokine levels (pg/ml) for five mice per experimental group in triplicate ± standard deviation. The single star on top of the bars shows the significant difference between BALB/c and C57BL/6 groups.

Measurement of indoleamine 2, 3 dioxygenase activity

IDO activity was assessed by kynurenine measurement in the supernatant of LPS-stimulated macrophages. According to figure 3, IDO activity increased in both mice groups after LPS treatment, but this increase was not statistically-significant. There was no difference between BALB/c and C57BL/6 macrophages in kynurenine production.

Nitric oxide measurement

NO production was measured in the supernatant of BALB/c and C57BL/6 macrophages at different time points after LPS treatment. NO production increased significantly in both groups after LPS stimulation (Fig 4). The increasing pattern of NO production at different time points differed between BALB/c and C57BL/6 macrophages. At 3 and 24 hours after LPS stimulation, BALB/c macrophages pro-

duced significantly higher amounts of NO than C57BL/6 macrophages. However, at 72 hours after LPS stimulation C57BL/6 macrophages produced significantly higher amounts of NO than BALB/c macrophages.

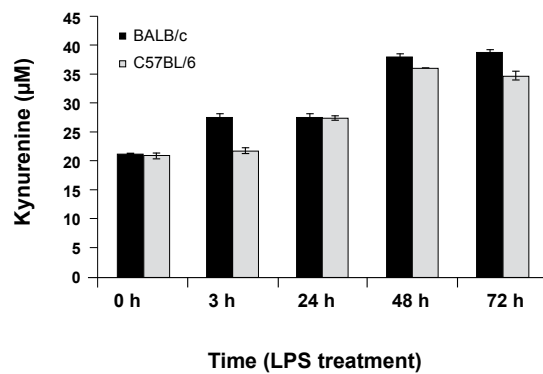


Fig 3: Kynurenine production by BALB/c and C57BL/6 peritoneal macrophages at 0 (pre-treatment), and 3, 24, 48, and 72 hours post-LPS treatment. Data shows the mean kynurenine level (µM) for five mice per experimental group in triplicate ± standard deviation.

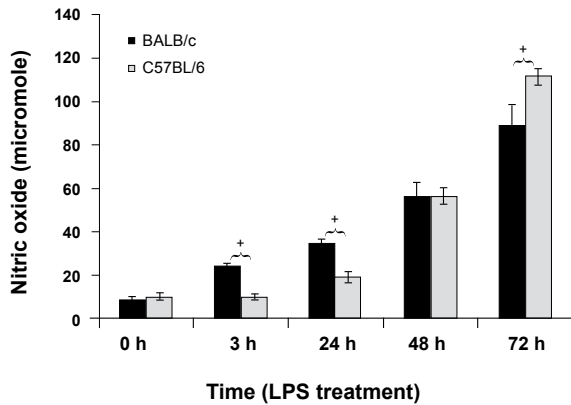


Fig 4: Nitric oxide (NO) production by BALB/c and C57BL/6 peritoneal macrophages at 0 (pre-treatment), and 3, 24, 48 and 72 hours post-LPS treatment. Data shows the mean NO level (μM) for five mice per experimental group in triplicate \pm standard deviation. The single star on top of the bars shows the significant difference between BALB/c and C57BL/6 groups.

Macrophage supernatant effect on splenocyte proliferation

An MTT assay was used to determine the effects of the supernatant from LPS-treated BALB/c and C57BL/6 macrophages on splenocyte proliferation. According to the stimulation index in Fig 5, proliferation of splenocytes was inhibited in the presence of the supernatant from LPS-treated macrophages. Stimulation index decreased significantly in the presence of the supernatants of 72-hour LPS-treated macrophages from BALB/c and C57BL/6 mice. There was no significant difference between the inhibitory effect of the supernatants of BALB/c and C57BL/6 macrophages.

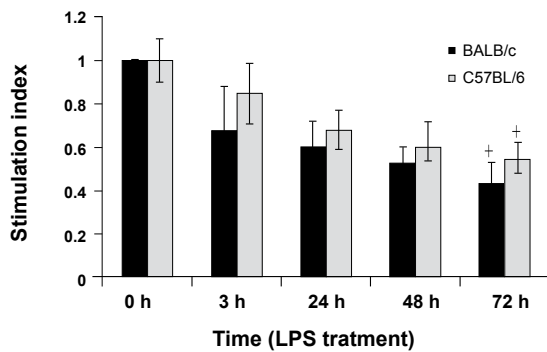


Fig 5: Lymphoproliferative responses of F1 hybrid mice (BALB/c x C57BL/6) spleen cells to the supernatants of BALB/c and C57BL/6 peritoneal macrophages at 0 (pre-treatment), and 3, 24, 48, and 72 hours post-LPS treatment. The results represent the average of SI for five mice per experimental group in triplicate \pm standard deviation.

Phagocytosis assay

LPS-treated peritoneal macrophages from BALB/c, and C57BL/6 mice were incubated for 1 hour with DAPI stained Saccharomyces cerevisiae at a 5: 1 ratio. After the incubation period, we analyzed the cells under a fluorescence microscope (Fig 6). In the different microscopic fields that were analyzed, we counted the number of cells that had internalized Saccharomyces cerevisiae and the number of internalized Saccharomyces cerevisiae per cell. The mean numbers of cells that contained Saccharomyces cerevisiae per total cell were reported as percent of phagocytosis (Fig 7A). The number of Saccharomyces cerevisiae ingested per phagocytosis was reported as the phagocytic index (Fig 7B). There was significant phagocytosis in both mice groups after 24 hours of LPS treatment. In addition, longer incubation with medium that contained LPS had a positive effect on phagocytosis. There was no significant difference between the percent of phagocytosis between BALB/c and C57BL/6 mice. According to the phagocytic index (Fig 7B), LPS treatment had a stimulatory effect on the number of internalized Saccharomyces cerevisiae. There was a significant difference between BALB/c and C57BL/6 mice according to the phagocytic index. As shown in figure 7, the mean number of internalized Saccharomyces cerevisiae after 72 hours of LPS treatment in C57BL/6 macrophages (9.7) was significantly higher than observed with BALB/c macrophages (3.6).

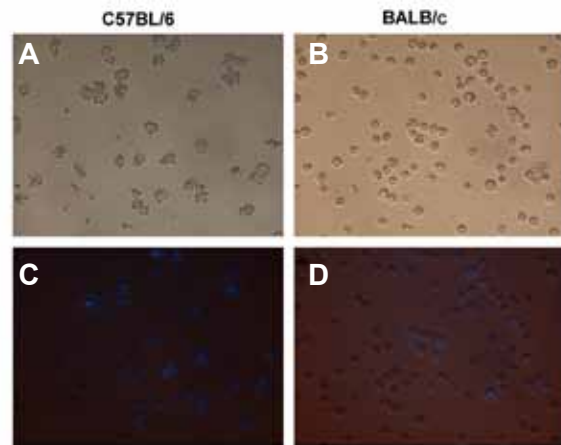


Fig 6: Phagocytosis of DAPI-stained Saccharomyces cerevisiae by C57BL/6 and BALB/c macrophages at 72 hours post-LPS treatment. A, B represent phase contrast and C, D represent florescent microscopy images of the macrophages after incubation for one hour with Saccharomyces cerevisiae ($\times 400$).

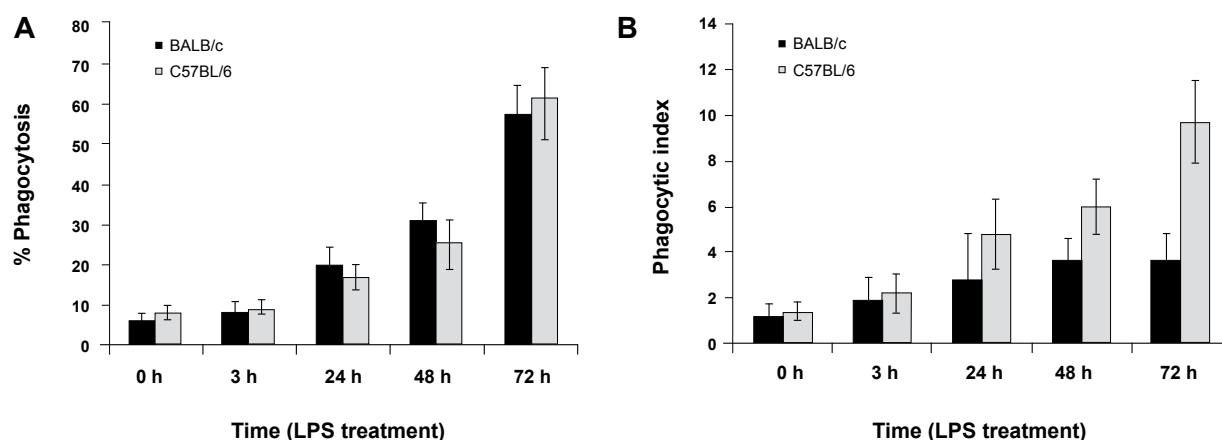


Fig 7: The mean numbers of macrophages that contain *Saccharomyces cerevisiae* per total macrophages at 0 (pre-treatment), and 3, 24, 48 and 72 hours post-LPS treatment (7 A). The mean number of *Saccharomyces cerevisiae* ingested per phagocyte at 0 (pre-treatment), and 3, 24, 48, and 72 hours post-LPS treatment (7 B). The single star on top of the bars shows significant difference between BALB/c and C57BL/6 groups.

Discussion

Numerous studies of macrophage function have shown various stimulators such as macrophage responses to specific stimulators such as LPS. These studies encompass the effects of LPS on genetic reprogramming and the expression of pro-inflammatory genes (11, 13), the signal transduction of LPS/TLR4 (6, 14, 15), inhibitors and stimulators of LPS function (7, 16-20), and macrophage migratory and inflammatory response to LPS (10, 21). In spite of that, all studies have done with the same cells called macrophages, and the same stimulus called LPS; we see discrepancies in results that make it difficult to use the same stimulus like LPS in a correct way for obtaining the favorite result. According to a literature review, variations in macrophage preparation and genetic background explain these discrepancies.

Ghosh et al. (9) have shown that the peritoneal cavity contains two different macrophage subsets, LPMs and SPMs that differ developmentally, physically, and functionally. They demonstrated that after thioglycolate stimulation, a population of blood monocytes infiltrate into the peritoneal cavity and mature as SPMs. SPMs express CD62L (L-selectin) and can migrate to other lymphoid organs as antigen presenting cells (APCs). Previous studies have shown that macrophages can be divided functionally to M-1/M-2 (5) according to their cytokine pattern and their effective role in the induction of Th₁/Th₂ in surrounding lymphocytes. In the current study, we have compared the effects

of LPS on the function of thioglycolate-stimulated peritoneal macrophages in BALB/c and C57BL/6 mice as representatives of the Th₂ and Th₁ immune response, respectively. After separation of the peritoneal macrophages, their purity was confirmed by flow cytometry measurement of the CD11b marker. Our results showed that thioglycolate stimulation induced CD14 expression in 93% of peritoneal macrophages. Fock et al. (21) demonstrated that only about 58% of peritoneal macrophages expressed CD14 without stimulation. Macrophages responded to LPS in the presence of CD14 and the TLR-4/MD-2 receptor complex. This result has shown that pre-separation thioglycolate stimulation may prepare macrophages to respond better to the next *in vitro* LPS stimulation. There was no difference between CD14 expression in BALB/c and C57BL/6 macrophages. A time course study of macrophage cytokine production after 1 µg/ml LPS treatment showed that LPS could induce cytokine production of thioglycolate-stimulated macrophages. There were more TGF-β₁ cytokines (1500 pg/ml) produced by BALB/c macrophages compared to those produced by C57BL/6 macrophages (400 pg/ml) at 72 hours post-LPS treatment. A larger quantity of IFN-γ cytokines (130 pg/ml) were produced by C57BL/6 macrophages compared to the quantity of IFN-γ cytokines (30 pg/ml) produced by BALB/c macrophages at 72 hours post-LPS treatment. These results confirmed the dominant M-2/M-1 responses of BALB/c and C57BL/6 macrophages. Our results indicated that during the first hours after LPS treatment the quan-

tivity of IL-17 and IL-10 produced by C57BL/6 macrophages was significantly higher than BALB/c macrophages; after 72 hours of LPS treatment both macrophages produced the same quantity of IL-17 and IL-10 cytokines. This result was the first comparative report on IL-17 and IL-10 production by LPS-stimulated peritoneal macrophages. The results have suggested that the different pattern of IL-17 and IL-10 cytokine production at the first 72 hours after LPS treatment in C57BL/6 and BALB/c macrophages were determinant in the formation of the M-1/M-2 micro-environment and induction of Th₁/Th₂ immune responses. As indicated in figure 3, IL-4 production by BALB/c macrophages was significantly higher than C57BL/6 macrophages at 72 hours after LPS treatment. The results demonstrated that during the first hours after LPS treatment, BALB/c macrophages produced more nitrite than C57BL/6 macrophages. After 72 hours, C57BL/6 macrophages produced significantly more nitrite compared to BALB/c macrophages. This result contrasted the previous reported results on the inhibitory effect of TGF- β_1 production on iNOS activity and nitrite production (22, 23). This contrast has explained the bi-directional modulatory effect of TGF- β_1 on macrophages. TGF- β_1 induces pro-inflammatory responses in resting macrophages, but induces anti-inflammatory responses in active macrophages according to their cytokine milieu (24).

In addition, the higher amount of nitrite production at 3 and 24 hours post-LPS treatment in BALB/c macrophages contrasted previous M2 macrophage behavior after LPS treatment. This could be explained by previous reports, which have shown that macrophages differentially metabolize arginine through arginase or iNOS activation, depending on the inflammatory condition (4, 25, 26). This contrast is related to different inflammatory conditions surrounding the BALB/c macrophages in the first 24 hours in our experiment, which was induced by thioglycolate stimulation (9).

Previous studies have shown that activation of IDO in macrophages has an inhibitory effect on T-cell proliferation (27). Some stimulators, like macrophage colony-stimulating factor or a combination of CD40 ligand and IFN- γ signals (28), can induce IDO activity. Our results have shown

that both BALB/c and C57BL/6 macrophages have IDO activity, with no difference between the amounts of kynurenine produced between them. In addition, LPS stimulation has no significant effect on IDO activity. In order to study the thioglycolate-stimulated macrophage effect on splenocyte proliferation, splenocytes of F1 hybrid BALB/c \times C57BL/6 mice were cultured in the presence of LPS-stimulated macrophage supernatants. To eliminate the splenocyte response to foreign antigens in the supernatant of macrophage cultures and employing the same source of splenocyte, F1 BALB/c \times C57BL/6 mice were used for splenocyte preparation (4). The results showed that macrophage supernatants significantly inhibited splenocyte proliferation at 72 hours post-LPS treatment. This result agreed with the increase in IDO activity at 72 hours post-LPS treatment in both BALB/c and C57BL/6 mice, and increased IL-10 and TGF- β_1 production in C57BL/6 and BALB/c mice, respectively. Phagocytosis is a complex process in macrophages, which are dependent on both internal and environmental characteristics. A phagocytosis assay can reflect the power of the pathogen to resist elimination and the ability of different macrophages and different macrophage stimulators to combat these pathogens (3, 16, 29). In this study, we have used a phagocytosis assay to compare different genetic background effects on phagocytosis. According to figure 7, we determined that LPS stimulated phagocytosis in both BALB/c and C57BL/6 macrophages. Data has shown no significant difference in the number of cells that phagocyte *Saccharomyces cerevisiae*, but C57BL/6 macrophages have greater phagocytic capacity. This result indicates that macrophages with different genetic backgrounds will respond to the same stimuli with different kinetics and in a different capacity. Variations in quality and quantity of phagocytic capacity, cytokine, and NO production at different times after the encounter to the same stimulus can explain the reason for different immune outcomes between BALB/c and C57BL/6 mice in response to infections.

Conclusion

This comparative study shows that BALB/c and C57BL/6 macrophages show different immune response to LPS stimulation according to their Th₂/Th₁ potential. Some discrepancies exist between

BALB/c and C57BL/6 macrophages in terms of their Th₂ and Th₁ behavior in immunologic response to LPS. These discrepancies show that LPS can modulate immune responses in different ways, not only depending on genetic background, but also on the current inflammatory context of the immune system induced by thiolglycolate stimulation.

This study represents the time course of immune response events of macrophages to LPS stimulation. The results enable us to select the best time for additional analyses in future experiments.

Acknowledgements

We express our appreciation to Tarbiat Modares University for their financial support. There is no conflict of interest in this article.

References

- Lu YC, Yeh WC, Ohashi PS. LPS/TLR4 signal transduction pathway. *Cytokine*. 2008; 42(2): 145-151.
- Schroder K, Sweet MJ, Hume DA. Signal integration between IFN γ and TLR signalling pathways in macrophages. *Immunobiology*. 2006; 211(6-8): 511-524.
- Rieger AM, Hall BE, Barreda DR. Macrophage activation differentially modulates particle binding, phagocytosis and downstream antimicrobial mechanisms. *Dev Comp Immunol*. 2010; 34(11): 1144-1159.
- Mills CD, Kincaid K, Alt JM, Heilman MJ, Hill AM. M-1/M-2 macrophages and the Th₁/Th₂ paradigm. *J Immunol*. 2000; 164(12): 6166-6173.
- Verreck FA, de Boer T, Langenberg DM, van der Zanden L, Ottenhoff TH. Phenotypic and functional profiling of human proinflammatory type-1 and anti-inflammatory type-2 macrophages in response to microbial antigens and IFN- γ - and CD40L-mediated costimulation. *J Leukoc Biol*. 2006; 79(2): 285-293.
- Wu CX, Sun H, Liu Q, Guo H, Gong JP. LPS induces HMGB1 relocation and release by activating the NF- κ B-CBP signal transduction pathway in the murine macrophage-like cell line RAW264.7. *J Surg Res*. 2012; 175(1): 88-100.
- Lee CJ, Tai YT, Lin YL, Chen RM. Molecular mechanisms of propofol-involved suppression of nitric oxide biosynthesis and inducible iNOS gene expression in LPS-stimulated macrophage-like raw 264.7 cells. *Shock*. 2010; 33(1): 93-100.
- Ekman AK, Fransson M, Rydberg C, Adner M, Cardell LO. Nasal challenge with LPS stimulates the release of macrophage inflammatory protein 1 α . *Int Arch Allergy Immunol*. 2009; 149(2): 154-160.
- Ghosh EE, Cassado AA, Govoni GR, Fukuhara T, Yang Y, Monack DM, et al. Two physically, functionally, and developmentally distinct peritoneal macrophage subsets. *Proc Natl Acad Sci USA*. 2010; 107(6): 2568-2573.
- Kleveta G, Borzęcka K, Zdioruk M, Czerkies M, Kuberczyk H, Sybirna N, et al. LPS induces phosphorylation of actin-regulatory proteins leading to actin reassembly and macrophage motility. *J Cell Biochem*. 2012; 113(1): 80-92.
- Kanaan Z, Gardner S, Carruba C, Mattingly J, Druen D, Cheadle WG. Macrophage genetic reprogramming during chronic peritonitis is augmented by LPS pretreatment. *J Surg Res*. 2011; 175(2): 289-297.
- Hashemi SM, Zuhair MH, Ghazanfari T, Shahabi S, Kheirandish M, Soudi S. The effect of injection of heat shocked tumor cell lysate on splenocytes proliferation and nitric oxide production in BALB/c mice with fibrosarcoma tumor. *Cell Journal (Yakhteh)*. 2006; 8(2): 106-113.
- Casals-Casas C, Alvarez E, Serra M, de la Torre C, Farrera C, Sánchez-Tilló E, et al. CREB and AP-1 activation regulates MKP-1 induction by LPS or M-CSF and their kinetics correlate with macrophage activation versus proliferation. *Eur J Immunol*. 2009; 39(7): 1902-1913.
- Puntambekar SS, Davis DS, Hawel L 3rd, Crane J, Byus CV, Carson MJ. LPS-induced CCL2 expression and macrophage influx into the murine central nervous system is polyamine-dependent. *Brain Behav Immun*. 2011; 25(4): 629-639.
- Meng F, Lowell CA. Lipopolysaccharide (LPS)-induced macrophage activation and signal transduction in the absence of Src-family kinases Hck, Fgr, and Lyn. *J Exp Med*. 1997; 185(9): 1661-1670.
- Monsalve E, Ruiz-García A, Baladrón V, Ruiz-Hidalgo MJ, Sánchez-Solana B, Rivero S, et al. Notch1 upregulates LPS-induced macrophage activation by increasing NF- κ B activity. *Eur J Immunol*. 2009; 39(9): 2556-2570.
- Kollipara RK, Perumal NB. Motif prediction to distinguish LPS-stimulated pro-inflammatory vs. antibacterial macrophage genes. *Immunome Res*. 2010; 6: 5.
- Fuentes AL, Millis L, Sigola LB. Laminarin, a soluble beta-glucan, inhibits macrophage phagocytosis of zymosan but has no effect on lipopolysaccharide mediated augmentation of phagocytosis. *Int Immunopharmacol*. 2011; 11(11): 1939-1945.
- Takahashi J, Sekine T, Nishishiro M, Arai A, Wakabayashi H, Kurihara T, et al. Inhibition of NO production in LPS-stimulated mouse macrophage-like cells by trihaloacetylazulene derivatives. *Anticancer Res*. 2008; 28(1A): 171-178.
- Jung CH, Jung H, Shin YC, Park JH, Jun CY, Kim HM, et al. Eleutherococcus extract attenuates LPS-induced iNOS expression through the inhibition of Akt and JNK pathways in murine macrophage. *J Ethnopharmacol*. 2007; 113(1): 183-187.
- Fock RA, Vinolo MA, de Moura Sá Rocha V, de Sá Rocha LC, Borelli P. Protein-energy malnutrition decreases the expression of TLR-4/MD-2 and CD14 receptors in peritoneal macrophages and reduces the synthesis of TNF- α in response to lipopolysaccharide (LPS) in mice. *Cytokine*. 2007; 40(2): 105-114.
- Forte G, Sorrentino R, Montinaro A, Pinto A, Morello S. CI-IB-MECA enhances TNF- α release in peritoneal macrophages stimulated with LPS. *Cytokine*. 2011; 54(2): 161-166.
- Ding A, Nathan CF, Graycar J, Derynck R, Stuehr DJ, Srinivasan S. Macrophage deactivating factor and transforming growth factor- β 1, - β 2 and - β 3 inhibit induction of macrophage nitrogen oxide synthesis by IFN- γ . *J Immunol*. 1990; 145(3): 940-944.
- Vodovotz Y, Bogdan C, Paik J, Xie QW, Nathan C. Mechanisms of suppression of macrophage nitric oxide release by transforming growth factor beta. *J Exp Med*. 1993; 178(2): 605-613.
- Albina JE, Mills CD, Henry WL Jr, Caldwell MD. Temporal

BALB/c and C57BL/6 Macrophage Responses to LPS Stimulation

- expression of different pathways of 1-arginine metabolism in healing wounds. *J Immunol.* 1990; 144(10): 3877-3880.
26. Mills CD, Shearer J, Evans R, Caldwell MD. Macrophage arginine metabolism and the inhibition or stimulation of cancer. *J Immunol.* 1992; 149(8): 2709-2714.
27. Munn DH, Shafizadeh E, Attwood JT, Bondarev I, Pashine A, Mellor AL. Inhibition of T cell proliferation by macrophage tryptophan catabolism. *J Exp Med.* 1999; 189(9): 1363-1372.
28. Munn DH, Armstrong E. Cytokine regulation of human monocyte differentiation in vitro: the tumor-cytotoxic phenotype induced by macrophage colony-stimulating factor is developmentally regulated by gamma-interferon. *Cancer Res.* 1993; 53(11): 2603-2613.
29. Marcil A, Harcus D, Thomas DY, Whiteway M. *Candida albicans* killing by RAW 264.7 mouse macrophage cells: effects of *Candida* genotype, infection ratios, and gamma interferon treatment. *Infect Immun.* 2002; 70(11): 6319-6329.
-