

# Molecular Analysis of the Clavulanic Acid Regulatory Gene Isolated from an Iranian Strain of *Streptomyces Clavuligerus*, PTCC 1709

Zohreh Hojati, Ph.D.<sup>1\*</sup>, Zahra Salehi, M.Sc.<sup>1</sup>, Majid Motovali-Bashi, Ph.D.<sup>1</sup>,  
Hasan Korbekandi, Ph.D.<sup>2</sup>, Saeed Jami, M.Sc.<sup>1</sup>

1. Department of Biology, Faculty of Sciences, University of Isfahan, Isfahan, Iran

2. Department of Genetics and Molecular Biology, Faculty of Medicine, Medical University of Isfahan, Isfahan, Iran

\* Corresponding Address: P.O. Box: 81746-7344, Biology Department, Faculty of Sciences, University of Isfahan, Isfahan, Iran

Email: z.hojati@sci.ui.ac.ir

Received: 5/Mar/2011, Accepted: 21/Jul/2011

## Abstract

**Objective:** The clavulanic acid regulatory gene (*claR*) is in the clavulanic acid biosynthetic gene cluster that encodes ClaR. This protein is a putative regulator of the late steps of clavulanic acid biosynthesis. The aim of this research is the molecular cloning of *claR*, isolated from the Iranian strain of *Streptomyces clavuligerus* (*S. clavuligerus*).

**Materials and Methods:** In this experimental study, two different strains of *S. clavuligerus* were used (PTCC 1705 and DSM 738), of which there is no *claR* sequence record for strain PTCC 1705 in all three main gene banks. The specific designed primers were subjected to a few base modifications for introduction of the recognition sites of *Bam*HI and *Cla*I. The *claR* gene was amplified by polymerase chain reaction (PCR) using DNA isolated from *S. clavuligerus* PTCC 1705. Nested-PCR, restriction fragment length polymorphism (PCR-RFLP), and sequencing were used for molecular analysis of the *claR* gene. The confirmed *claR* was subjected to double digestion with *Bam*HI and *Cla*I. The cut *claR* was ligated into a pBluescript (pBs) vector and transformed into *E. coli*.

**Results:** The entire sequence of the isolated *claR* (Iranian strain) was identified. The presence of the recombinant vector in the transformed colonies was confirmed by the colony-PCR procedure. The correct structure of the recombinant vector, isolated from the transformed *E. coli*, was confirmed using gel electrophoresis, PCR, and double digestion with restriction enzymes.

**Conclusion:** The constructed recombinant cassette, named pZS*claR*, can be regarded as an appropriate tool for site directed mutagenesis and sub-cloning. At this time, *claR* has been cloned accompanied with its precisely selected promoter so it could be used in expression vectors. Hence the ClaR is known as a putative regulatory protein. The over-produced protein could also be used for other related investigations, such as a mobility shift assay.

**Keywords:** *S. clavuligerus*, *claR*, Clavulanic acid

Cell Journal (Yakhteh), Vol 13, No 3, Autumn 2011, Pages: 179-186

## Introduction

*Streptomyces* species are mycelial, aerobic gram-positive bacteria readily isolated from soil (1, 2). *Streptomyces* are unique among prokaryotes due to their complicated morphological differentiation (3). These morphological changes are accompanied by a wide range of physiological events, including the production of secondary metabolites, many of which have potentially important biological activities. They include many useful antibiotics and other products, such as antitumor drugs and herbicides (4-8). *Streptomyces clavuligerus* (*S. clavuligerus*) produces the  $\beta$ -lactam antibiotic, cephamycin C and the  $\beta$ -lactamase inhibitor, clavulanic acid

(9-11). Clavulanic acid is a clinically significant inhibitor of  $\beta$ -lactamases, while the other clavam metabolites produced by *S. clavuligerus* demonstrate weak antibacterial and antifungal activities (1, 9). Several other *Streptomyces* species have also been determined to be producers of clavulanic acid (12, 13). The combined use of clavulanic acid and broad-spectrum  $\beta$ -lactam antibiotics such as amoxicillin are an important therapeutic tactic to combat the rapid increase in  $\beta$ -lactam resistance (14-17). The cluster of genes for clavulanic acid biosynthesis is located downstream from the *pcbC* gene of the cephamycin C cluster in *S. clavuligerus* (18, 19). Most genes of the cephamycin and clavu-

lanic acid clusters are known (20-24). All essential genes of the clavulanic acid pathway are within a 12kb *EcoRI* DNA fragment of the *S. clavuligerus* genome, because this fragment appears to confer production of clavulanic acid when introduced in *Streptomyces lividans* (25). Very little is known about the regulation of the genes of the clavulanic acid cluster. The transcriptional activators CcaR and ClaR are known to regulate the expression of clavulanic acid biosynthetic genes (26-28). The *ccaR* gene lies within the cephamycin biosynthetic gene cluster. This gene is a pathway-specific transcriptional regulator for cephamycin biosynthesis, as well as a controlling expression of the *claR* gene from the clavulanic acid gene cluster (21, 29-31). Another regulatory gene, *claR*, is located immediately downstream from *orf-7* in the clavulanic acid cluster and encodes a 431 amino acid protein (31, 32). The regulatory nature of the ClaR protein has been deduced from the presence of one helix turn helix (HTH) motif and flanking sequences which show significant similarity to LysR transcriptional regulators (33). Finally, the absence of *orf-7*, *orf-9* and *orf-10* transcripts in a *claR* mutant blocked in clavulanic acid production confirmed the regulatory role of ClaR (32- 34).

To increase the amount of clavulanic acid produced by *S. clavuligerus*, different tactics have been employed by researchers. Enhancement of clavulanic acid production was seen in *S. clavuligerus* in the presence of peanut (*Arachis hypogaea*) seed flour and its fractions (35). Random mutagenesis was performed on *S. clavuligerus*. The new mutated strains were able to produce the elevated level of clavulanic acid (36).

Since clavulanic acid is produced industrially by fermentation using *S. clavuligerus*, the regulation of clavulanic acid biosynthesis is a point of great interest. It has been shown that the cloning of the *claR* gene in the *S. clavuligerus* resulted in a three-fold increase in clavulanic acid production (31). In our previous work, an isolated *claR* gene was ligated to a *Streptomyces* specific vector (pMA::hyg). The cloned *claR* genes had been isolated from two standard strains of *Streptomyces*.

In this work, a new recombinant construct that carries the *claR* regulatory gene is presented. This vector not only transfers the *claR* gene isolated from one Iranian strain of *S. clavuligerus*, but also contains an inducible promoter.

## Materials and Methods

### Bacterial strains

*S. clavuligerus* DSM 41826 (DSM, Germany) and *S. clavuligerus* PTCC 1705 (Iranian Scientific and

Industrial Research Organization, Iran) were used in this study. *Escherichia coli* (*E. coli*) XL1-Blue was also used in this study. The *Streptomyces* strains were grown in defined conditions as described previously (37). A suspension of *Streptomyces* spores was prepared in 20% (v/v) glycerol and stored at -20°C (38). Cultures for the isolation of chromosomal DNA were prepared by inoculating 100 ml of yeast extract medium (YEM) with 100 µl of spore suspension. The YEM medium was prepared as described previously (37). Luria-bertani (LB) agar medium (that contained per liter: 10 g of trypton, 5 g of bacto-yeast extract, 10 g of NaCl and 17 g of agar; pH= 7.5) supplemented with Ampicillin (100 µg/ml), whenever required, was used for the propagation of *E. coli* at 37°C. The bacterial pellet was stored in 20% glycerol at -20°C.

### Vector

The pBs SK reproduced from Stratagene Catalogue was used as the vector in this study.

### Primers

OLIGO® version 5.0 software (39) was used for designing all primers. The entire coding region of the gene was considered for primer selection. Accession number AJ000671.1, GI:2764535 (or U87786.2, GI:9280818) was used for obtaining the *claR* sequence. These accession numbers are based on *S. clavuligerus* ATCC 2706. This strain is the same as *S. clavuligerus* DSM 738, as mentioned in the NCBI. One set of primers (*claR1*) was designed for nested PCR (F: 5'GCC TGG AGC AGA TGG AG 3' and R: 5'AGG TGC TGT CGC TGG TCT 3'). Two primers (*claR2*) were designed for isolation of the *claR* gene from genomic DNA of *S. clavuligerus* (F: 5'CAT GGA TCC GTA TCT GTA CC 3' and R: 5'TAG GAT CGA TTC CGA AGC 3'). These primers were subjected to modification at each 5' end in order to have two recognition sites for *Bam*HI and *Cla*I (Fig 1).

### Separation of total genomic DNA from *Streptomyces*

Total genomic DNA was isolated from the liquid culture of *Streptomyces* using the High Pure PCR Template Preparation Kit (Roche; Cat. No.1 796 828). The amount of DNA was quantified by gel electrophoresis and spectrophotometric analysis.

### Polymerase chain reaction (PCR)

The reaction mixture for PCR amplification was prepared as follows: forward primer, 20 pM; reverse primer, 20 pM; dimethyl sulfoxide

(DMSO), 4  $\mu$ l; 10 $\times$ PCR buffer without MgSO<sub>4</sub> (200 mM Tris-HCl, 100 mM (NH<sub>4</sub>)<sub>2</sub>SO<sub>4</sub>, 100 mM KCl, 1% (v/v) Triton X-100, 1 mg/ml bovine serum albumin (BSA)), 5  $\mu$ l; MgSO<sub>4</sub>, 3  $\mu$ l; deoxynucleoside triphosphates (dNTPs), 2  $\mu$ l (10 mM each dNTP); and H<sub>2</sub>O, up to 50  $\mu$ l. A total of 100 ng of chromosomal DNA was added as the template DNA. The PCR reactions were then carried out using 0.3  $\mu$ l (2.5 U/ $\mu$ l) of *Pfu* polymerase enzyme. The amplification steps for the main PCR were as follows: hot start at 95°C for 5 minutes; 33 cycles of denaturation at 94°C for 1 minute, annealing at 60°C for 1 minute, primer extension at 72°C for 4 minutes, and a final extension at 72°C for 15 minutes. These conditions were set up for the modified primers. The amplification procedure was slightly different for the nested primers. The PCR was carried out normally for 30-35 cycles. The products were visualized by a standard electrophoresis procedure using 0.7% (W/V) agarose gels.

#### Restriction endonuclease (RE) digestion

Two sets of primers were designed not only to ampli-

fy the *claR* region, but also to integrate one unique recognition site (*Bam*HI and *Cla*I) in each end of the amplified fragments. Digestion was performed following the recommendations of the manufacturer (Fermentas, Germany). Required amounts of DNA samples (0.2-5  $\mu$ g) were generally digested with 5-10 units of restriction enzymes (*Bam*HI and *Cla*I) in a 10-20  $\mu$ l final volume of restriction buffer (10 $\times$  buffer) for about 1-3 hours in a water bath at the recommended temperature (normally 37°C). A sample was run on an agarose gel after incubation with each enzyme, which ensured that the digestion was done completely (40).

#### DNA ligation

DNA ligation was performed using one unit of T4 DNA ligase (Fermentas, Germany) in the presence of 1 $\times$  ligation buffer. The 3:1 molar ratio of insert to vector was used in order to optimize transformation. Incubation was done at 16°C overnight (40). The products of the ligase reaction (a 20 ng aliquot from the completed ligase mixture) were analyzed by electrophoresis on a 2  $\times$  50  $\times$  75 mm agarose gel (mini gel).

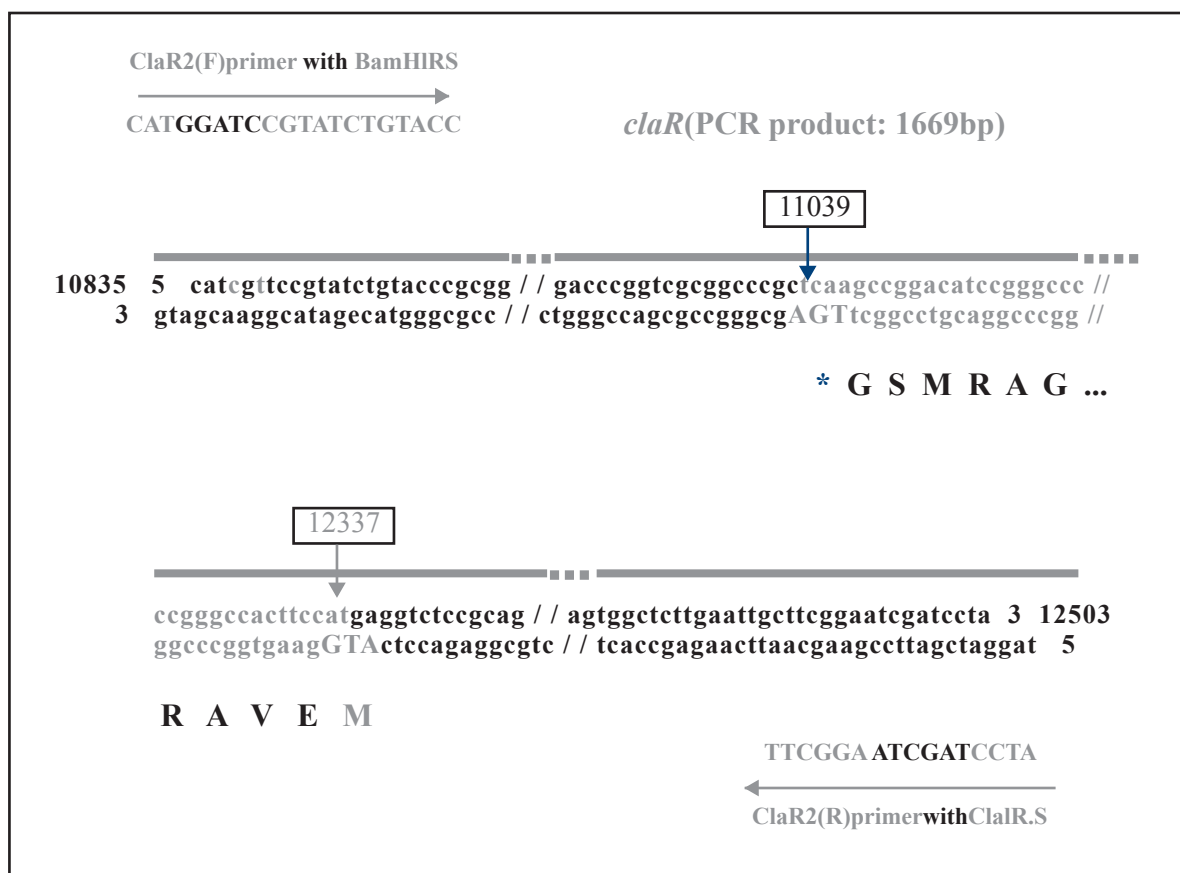


Fig 1: Nucleotide sequence of the *claR* gene. The main primers have been subjected to a few nucleotide modifications as shown here (This figure has also been printed in full-color at the end of this issue).

### Transformation of *E. coli*

For making competent cells from *E. coli*, the calcium chloride method was used (40). An aliquot (200  $\mu$ l) of frozen competent cells were slowly thawed on ice for about 30 minutes. Cells were gently mixed with DNA and incubated on ice for 30 minutes. The cells were then heat shocked at 42°C for 90 seconds. They were added to 2 ml LB (without antibiotic) and incubated at 37°C for one hour in a shaking incubator. A total of 100  $\mu$ l of transformed cells were spread on the surface of the LB plate that contained an antibiotic. The plates were allowed to dry before overnight incubation at 37°C (40).

### Extraction of plasmid DNA from *E. coli*

*E. coli* DNA was isolated according to the method described by Holmes and Quigley (40). The overnight LB culture of *E. coli* was harvested by centrifugation (13K rpm, 30 seconds). The pellet was re-suspended in 350  $\mu$ l of STET [0.3 M NaCl, 10 mM Tris-HCl (pH= 8.0), 1mM EDTA (pH= 8.0), 0.5% Triton X-100] buffer, and subsequently 25  $\mu$ l of freshly prepared lysozyme solution (10 mg/ml lysozyme in 10 mM TrisCl) was added. The tube that contained bacterial lysate was placed in a boiling water bath for 40 seconds before centrifugation at room temperature (12K rpm, 10 minutes). The pellet of bacterial cell debris was removed using a sterile toothpick. Plasmid DNA was precipitated with cold sodium acetate and isopropanol, washed with 70% ethanol, and re-dissolved in 50  $\mu$ l of TE containing 10 g/ml RNase (40).

### DNA sequencing

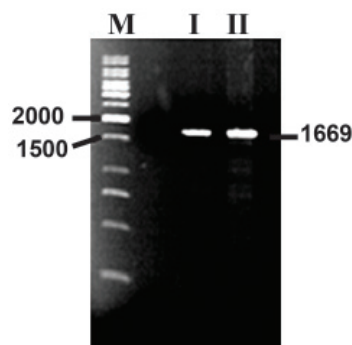
DNA sequencing was carried out using the Applied Biosystem (ABI) system (Bioneer, Italy).

## Results

### Isolation and molecular analysis of *claR* gene

Total DNA was isolated from *Streptomyces* and subjected to gel electrophoresis to analyze the concentration and purity. The pure, isolated total DNA was used for PCR reactions. Two different sets of primers were used. The *claR* gene was successfully amplified by using the *claR2* primer set (Fig 2).

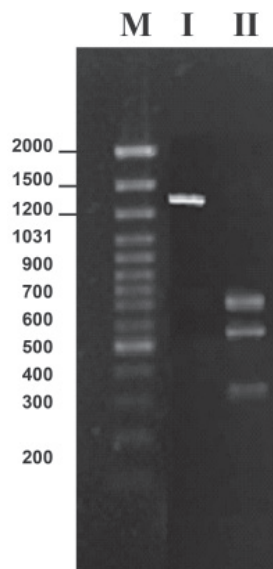
The isolated fragment had to be studied in more detail to further compare it with the original *claR* of *S. clavuligerus* DSM738. Two different strategies were conducted to not only confirm the amplified fragment as *claR* gene, but to also compare it with the *claR* gene sequence from *S. clavuligerus* DSM738. Initially nested PCR, using the *claR1* primer set, confirmed the existence of *claR* gene (data not shown).



**Fig 2: Amplification of *claR* with its native promoter from *S. clavuligerus* PTCC 1705 by PCR.**

**I. *S. clavuligerus* total genomic DNA (isolated either from DSM738 or PTCC 1705) was used in the PCR reaction. The numbers are in base pair (bp), II. PTCC1705, III. DSM738, M. Marker; GeneRulerTM 1kb DNA ladder.**

On the other hand, the results of the nested PCR have confirmed the approximate similarity between these two genes (*claR* isolated from Iranian *S. clavuligerus* and *S. clavuligerus* DSM738). This conclusion was achieved because the *claR* sequence of *S. clavuligerus* DSM738 had been used to design the primers. RFLP- PCR was then carried out using the *SalI* restriction enzyme. *SalI* cuts the *claR* gene at 740 and 1331 bp, producing three fragments, 740, 591 and 338 bp. The resultant fragments confirmed the correct structure for the isolated *claR* gene (Fig 3).

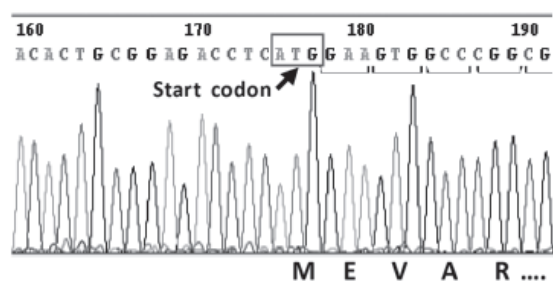


**Fig 3: Molecular study of the *claR*, using restriction digestion analysis. PCR amplified *claR* was cut with different restriction enzymes. The results are visualized by gel electrophoresis (2%). The numbers are in bp.**

**I. Cut with *XbaI*: This enzyme does not cut the *claR* fragment, II. Cut with *SalI*: This enzyme cuts the *claR* at two sites 740 and 1331 (leaving three fragments, 740 bp, 591 bp and 338 bp), M. Marker; GeneRulerTM 100 bp DNA Ladder Plus.**



Sequencing analysis of the *claR* gene revealed that the *claR* gene was amplified and sub-cloned, free from any mutation that was also essential for the correct expression of the gene. Bioinformatics analysis determined the complete similarity between the isolated *claR* of the Iranian strain *S. clavuligerus* and *S. clavuligerus* 738 (Fig 4).



**Fig 4:** Structural analysis of the cloned *claR*, isolated from *S. clavuligerus* PTCC 1705. The start codon (ATG) of the *claR* gene has been shown here along with a few initial sequences related to amino acids E, V, A, and R. Not all the sequences have been shown (This figure has also been printed in full-color at the end of this issue).

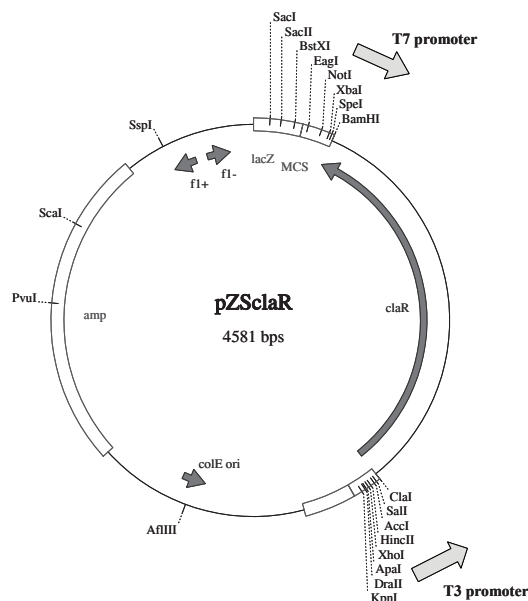
The sequence of the *claR* gene from *S. clavuligerus* PTCC 1705 was determined for the first time in this study and will be submitted to the DDBJ/EMBL/GenBank databases in the near future.

#### Cloning of the *claR* gene

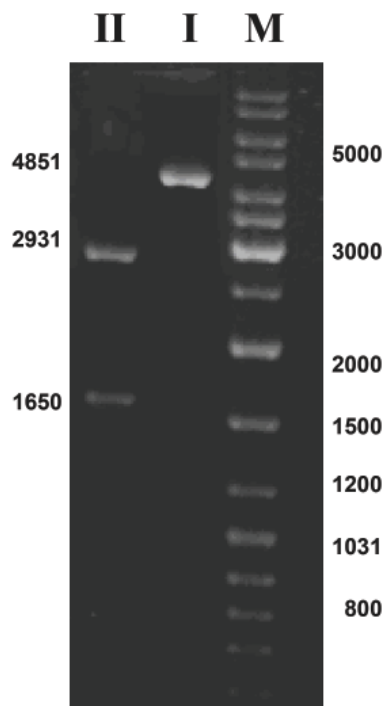
*E. coli* XL1-Blue was transformed with pBS plasmid. The pBs plasmid was then isolated from the transformed *E. coli* and subjected to double digestion (with *Bam*HI and *Cla*I), gel electrophoresis, and gel purification. The PCR amplified fragment was also double digested with *Bam*HI and *Cla*I, and the resultant cut fragment was purified by gel electrophoresis. A ligation mixture was set up using the double digested vector and the *claR* gene. *E. coli* XL1-Blue competent cells were transformed using 10 µl of the ligation mixture. About 20 colonies were observed on each plate, which was inoculated with 100 µl of the transformed cells of *E. coli* XL1-Blue.

Therefore, the recombinant plasmid was isolated from a transformed colony. Molecular studies were then conducted on a 4581 bp new construct named *pZSclaR* (Fig 5). The isolated plasmid was subjected to gel electrophoresis for initial confirmation of the size of the constructed vector (Fig 6).

*pZSclaR* was then cut with *Bam*HI and *Cla*I for further confirmation of its structure and the resultant fragments were separated and visualized by gel electrophoresis.



**Fig. 5:** A physical map of the vector *pZSclaR*, 4581 bp. This plasmid map was drawn using computer software *Clone Manager 6* (This figure has also been printed in full-color at the end of this issue).



**Fig. 6:** Structural confirmation of the *pZSclaR* using restriction digestion analysis. The *pZSclaR* plasmid was subjected to double digestion with *Bam*HI and *Cla*I. The cut fragments were subjected to gel electrophoresis (0.7 %). Numbers are in bp.

I. *pZSclaR* plasmid (uncut: 4581 bp), II. *pZSclaR* plasmid cut with *Bam*HI and *Cla*I, M. Marker Gene Ruler™ 1kb DNA Ladder.

These two enzymes cut the pZScl<sub>R</sub> plasmid (4581) and separated the *claR* gene (1650 bp) from the original vector (pBs; 2931 bp). pZScl<sub>R</sub> was then used as the PCR template in a PCR reaction containing nested primers that could confirm the existence of the *claR* gene. Therefore the correct recombinant plasmid did exist in the recombinant strain of *E. coli*.

## Discussion

The overall aim of this work was to expand our knowledge of the regulation of antibiotic production in *Streptomyces* (the producer of two thirds of all known microbial antibiotics). Genetic engineering of the clavulanic acid producing strains could be done afterwards, in order to increase the capacity of clavulanic acid production in *S. clavuligerus*. It has been reported that *cdaR*, the regulatory gene for the production of a calcium dependent antibiotic (CDA), positively regulates its own transcription. As a result, introducing extra copies of *cdaR* into different strains of *Streptomyces coelicolor* MT1110, *S. coelicolor* 2377 and *Streptomyces lividans* has led to overproduction of this antibiotic (41). Designing novel antibiotics, on the other hand, is greatly dependent on the structural analysis of the gene cluster for each antibiotic. Clavulanic acid is a multi-billion-dollar per annum product useful for its  $\beta$ -lactamase inhibitory activity. While the biosynthesis of clavulanic acid has been the subject of intense investigation in recent years, the details of its production and regulation are still not completely worked out.

Amplification of the *ccaR* gene, a regulatory gene in the cephamycin gene cluster, resulted in an almost threefold increase in the production of both cephamycin and clavulanic acid in *S. clavuligerus* (20). The formation of clavulanic acid is controlled by a LysR-type regulatory protein encoded by the *claR* gene. The *claR* gene was then chosen because this is a putative regulatory gene in the production pathway of clavulanic acid (33). The *claR* gene, which is located downstream from the gene encoding clavaminic synthase in the clavulanic acid biosynthesis gene cluster, is involved in regulation of the late steps in clavulanic acid biosynthesis (32-34). Amplification of the *claR* gene using multi-copy plasmids and under its own promoter in *S. clavuligerus* results in a three-fold increase in clavulanic acid production (31).

We precisely amplified the coding sequence of *claR* accompanied with its promoter by using a specifically designed primer and an error proof PCR. In this case, only the promoter sequence of the gene comes with the *claR*. Since the distance between

the vector born promoter and the *claR* transcription start point is not too great, the expression of the cloned gene could also be started by two individual promoters that exist in the vector. Therefore, the usage of three promoters (one native *claR* gene and two vector-born) leads to an elevated level of *claR* gene expression. Prior to this study and in contrast to other regulatory genes in *S. clavuligerus*, *claR* has not been isolated by PCR, but has been previously cloned via restriction enzyme digestion (31). For the first time, in the present study, the *claR* gene was isolated from an Iranian strain of *S. clavuligerus* PTCC 1705. The PCR isolated *claR* was initially compared with the *claR* sequence of *S. clavuligerus* DSM 738, using nested PCR and restriction digestion analysis. The *claR* isolated from the *S. clavuligerus* PTCC 1705 was finally sequenced. Thus the entire sequence of *S. clavuligerus claR* was determined. The sequencing data was subjected to bioinformatics analysis for further comparison with the *claR* sequence of *S. clavuligerus* 738 and other species. Complete similarity was found between the sequence of *claR* isolated from PTCC 1705 and *S. clavuligerus* DSM 738.

In our previous work, *claR* was ligated into a *Streptomyces* specific vector, pMA::hyg (39). However that vector does not have any inducible promoter. On the other hand, pMA::hyg does not contain any other cut sites for other restriction enzymes (39), so the subcloning of *claR* was practically impossible. To overcome these problems, new primers were designed with new incorporated cut sites for *Bam*HI and *Cla*I. The amplified *claR* was then cloned in *E. coli* by using a newly constructed vector called pZScl<sub>R</sub> (Fig 4). This unique vector contains a greatly expanded multiple cloning site (MCS), which makes it suitable for different purposes of gene cloning. Furthermore, this new construct is expression and inducible. In the same way, increasing the copy number of certain clavulanic acid-specific biosynthetic genes, by the introduction of multiple copy expression plasmids, resulted in positive effects on the production of clavulanic acid (42).

## Conclusion

Characterization of isolated *claR* from an Iranian strain of *S. clavuligerus* PTCC 1705 was carried out using molecular studies. This gene was cloned in *E. coli* via a multiple copy expression vector. The constructed recombinant cassette (pZScl<sub>R</sub>) may also be utilized as an appropriate tool for site directed mutagenesis and sub-cloning. The *ClaR* is recognized as a putative regulatory protein, so

the overproduced protein could also be used for other related investigations, such as an enzyme assay and a mobility shift assay. The *claR* gene could also be expressed in *Streptomyces* by sub-cloning it into different varieties of *Streptomyces* specific expression vectors.

## Acknowledgments

This study was performed at the University of Isfahan and financially supported by the Graduate Studies Office. The authors declared no conflict of interest in this article.

## References

1. Chater KF. Streptomyces inside-out: a new perspective on the bacteria that provide us with antibiotics. *Philos Trans R Soc Lond B Biol Sci.* 2006; 361 (1469): 761-768.
2. Chater KF, Horinouchi S. Signalling early developmental events in two highly diverged Streptomyces species. *Mol Microbiol.* 2003; 48(1): 9-15.
3. Anderson AS, Clark DJ, Gibbons PH, Sigmund JM. The detection of diverse aminoglycoside phosphotransferases within natural populations of actinomycetes. *J Ind Microbiol Biotechnol.* 2002; 29(2): 60-69.
4. Hopwood DA. How do antibiotic-producing bacteria ensure their self-resistance before antibiotic biosynthesis incapacitates them? *Mol Microbiol.* 2007; 63(4): 937-940.
5. Azambuja E, Fleck JF, Batista RG, Menna Barreto SS. Bleomycin lung toxicity: who are the patients with increased risk? *Pulm Pharmacol Ther.* 2005; 18(5): 363-366.
6. Challis GL, Hopwood DA. Synergy and contingency as driving forces for the evolution of multiple secondary metabolite production by Streptomyces species. *Proc Natl Acad Sci U S A.* 2003; 100(2): 14555-14561.
7. Hesketh A, Sun J, Bibb M. Induction of ppGpp synthesis in Streptomyces coelicolor A3(2) grown under conditions of nutritional sufficiency elicits actII-ORF4 transcription and actinorhodin biosynthesis. *Mol Microbiol.* 2001; 39(1): 136-144.
8. Aigle B, Wietzorrek A, Takano E, Bibb MJ. A single amino acid substitution in region 1.2 of the principal sigma factor of Streptomyces coelicolor A3(2) results in pleiotropic loss of antibiotic production. *Mol Microbiol.* 2000; 37(5): 995-1004.
9. Tahlan K, Anders C, Jensen SE. The Paralogous Pairs of genes involved in clavulanic acid and clavam metabolite biosynthesis are differently regulated in *S. clavuligerus*. *J Bacteriol.* 2004; 186(18): 6286-6297.
10. Liras P, Martin JF. Gene clusters for beta-lactam antibiotics and control of their expression: why have clusters evolved, and from where did they originate? *Int Microbiol.* 2006; 9(1): 9-19.
11. Hung TV, Ishida K, Parajuli N, Liou K, Lee HC, Sohng JK. Enhanced clavulanic acid production in *S. clavuligerus* NRRL3585 by overexpression of regulatory genes. *Biotechnol. Bioprocess Eng.* 2006; 11(2):116-120.
12. Bignell DR, Tahlan K, Colvin KR, Jensen SE, Leskiw BK. Expression of *ccaR*, encoding the positive activator of cephamycin C and clavulanic acid production in *S. clavuligerus*, is dependent on *bldG*. *Antimicrob Agents Chemother.* 2005; 49(4):1529-1541.
13. Jensen SE, Paradkar AS. Biosynthesis and molecular genetics of clavulanic acid. *Antonie Van Leeuwenhoek.* 1999; 75(1-2):125-133.
14. Tahlan K, Park HU, Jensen SE. Three unlinked gene clusters are involved in clavam metabolite biosynthesis in *S. clavuligerus*. *Can J Microbiol.* 2004; 50(10): 803-810.
15. Vanhoof R, Carpentier M, Delannoy P, Fagnart O, Lontie M, Mans I, et al. Study of the in vitro activity of amoxicillin/clavulanic acid and other beta-lactam antibiotics against *E. coli* isolated from urine specimens. *Acta Clin Belg.* 2001; 56(1): 32-37.
16. Leflon-Guibout V, Speldooren V, Heym B, Nicolas-Chanoine M. Epidemiological survey of amoxicillin-clavulanate resistance and corresponding molecular mechanisms in *E. coli* isolates in France: new genetic features of *bla* (TEM) genes. *Antimicrob Agents Chemother.* 2000; 44(10): 2709-2714.
17. Baggaley KH, Brown AG, Schofield CJ. Chemistry and biosynthesis of clavulanic acid and other clavams. *Nat Prod Rep.* 1997; 14(4): 309-333.
18. Li R, Khaleeli N, Townsend CA. Expansion of the clavulanic acid gene cluster: identification and in vivo functional analysis of three new genes required for biosynthesis of clavulanic acid by *S. clavuligerus*. *J Bacteriol.* 2000; 182(14): 4087-4095.
19. Ward JM, Hodgson JE. The biosynthetic genes for clavulanic acid and cephamycin production occur as a 'super-cluster' in three Streptomyces. *FEMS Microbiol Lett.* 1993; 110(2): 239-242.
20. Santamarta I, Rodríguez-García A, Pérez-Redondo R, Martin JF, Liras P. CcaR is an autoregulatory protein that binds to the *ccaR* and *cefD-cmcl* Promoters of the Cephamycin C-clavulanic acid cluster in *S. clavuligerus*. *J Bacteriol.* 2002; 184(11): 3106-3113.
21. Perez-Liarena FJ, Liras P, Rodríguez-García A, Martin JF. A regulatory gene (*ccaR*) required for cephamycin and clavulanic acid production in *S. clavuligerus*: amplification results in overproduction of both beta-lactam compounds. *J Bacteriol.* 1997; 179(6): 2053-2059.
22. Coque JJ, Enguita FJ, Martin JF, Liras P. A two-protein component 7alpha-cephem-methoxylase encoded by two genes of the cephamycin C cluster converts cephalosporin to 7-methoxycephalosporin C. *J Bacteriol.* 1995; 177(8): 2230-2235.
23. Coque JJ, Liras P, Martin JF. Genes for a beta-lactamase, a penicillin-binding protein and a transmembrane protein are clustered with the cephamycin biosynthetic genes in *Nocardia lactamdurans*. *EMBO J.* 1993; 12(2): 631-639.
24. Yu H, Serpe E, Romero J, Coque JJ, Maeda K, Oelgeschlager M, et al. Possible involvement of the lysine epsilon-aminotransferase gene (*lat*) in the expression of the genes encoding ACV synthetase (*pcb AB*) and isopenicillin N synthase (*pcb C*) in *S. clavuligerus*. *Microbiology.* 1994; 140(pt 12): 3367-3377.
25. Mellado E, Lorenzana LM, Rodríguez-Sáiz M, Díez B, Liras P, Barredo JL. The clavulanic acid biosynthetic cluster of Streptomyces clavuligerus: genetic organization of the region upstream of the *car* gene. *Microbiology.* 2002; 148(5): 1427-1438.
26. Bignell DR, Tahlan K, Colvin KR, Jensen SE, Leskiw BK. Expression of *ccaR*, encoding the positive activator of cephamycin C and clavulanic acid production in *S. clavuligerus*, is dependent on *bldG*. *Antimicrob Agents Chemother.* 2005; 49(4): 1529-1541.

27. Wang L, Tahlan K, Kaziuk TL, Alexander DC, Jensen SE. Transcriptional and translational analysis of the *ccaR* gene from *S. clavuligerus*. *Microbiology*. 2004; 150(pt 12): 4137-4145.
  28. Jensen SE, Paradkar AS, Mosher RH, Anders C, Beaty PH, Brumlik MJ, et al. Five additional genes are involved in clavulanic acid biosynthesis in *S. clavuligerus*. *Antimicrob Agents Chemother*. 2004; 48(1):192-202.
  29. de la Fuente A, Lorenzana LM, Martín JF, Liras P. Mutants of *S. clavuligerus* with disruptions in different genes for clavulanic acid biosynthesis produce large amounts of holomycin: possible cross-regulation of two unrelated secondary metabolic pathways. *J Bacteriol*. 2002; 184(23): 6559-6565.
  30. Alexander DC, Jensen SE. Investigation of the *S. clavuligerus* cephamycin C gene cluster and its regulation by the *CcaR* protein. *J Bacteriol*. 1998; 180(16): 4068-4079.
  31. Perez-Redondo R, Rodríguez-García A, Martín JF, Liras P. The *claR* gene of *S. clavuligerus*, encoding a LysR-type regulatory protein controlling clavulanic acid biosynthesis, is linked to the clavulanate-9-aldehyde reductase (*car*) gene. *Gene*. 1998; 211(2): 311-321.
  32. Paradkar AS, Aidoo KA, Jensen SE. A pathway-specific transcriptional activator regulates late steps of clavulanic acid biosynthesis in *S. clavuligerus*. *Mol Microbiol*. 1998; 27(4): 831-843.
  33. Song JY, Kim ES, Kim DW, Jensen SE, Lee KJ. A gene located downstream of the clavulanic acid gene cluster in *S. clavuligerus* ATCC 27064 encodes a putative response regulator that affects clavulanic acid production. *J Ind Microbiol Biotechnol*. 2009; 36 (2): 301-311.
  34. Jnawali HN, oh TJ, Liou K, Park BC, Sohng JK. A two-component regulatory system involved in clavulanic acid production. *J Antibiot*. 2008; 61(11): 651-659.
  35. Hamed J, Tir Andaz H, Salehi Najaf Abadi A. Enhancement of the growth of *S. clavuligerus* and clavulanic acid production with peanut (*Arachis hypogaea*) seed flour. *J of Science, (Univ of Tehran)*. 2008; 33(4):63-68.
  36. Korbekandi H, Darkhal P, Hojati Z, Abedi D, Hamed J, Pourhosein M. Overproduction of Clavulanic Acid by UV Mutagenesis of *S. clavuligerus*. *Iran J of Pharmac Research*. 2010; 9(2): 177-181.
  37. Ghazi Sherbaf F, Hojati Z, Motovali-Bashi M. Construction of two new recombinant vectors containing clavulanic acid antibiotic regulatory gene, *claR*, isolated from two strains of *S. clavuligerus*. *Iran J Biotech*. 2009; 7(2): 112-116.
  38. Kieser T, Bibb M J, Buttner M J, Chater K F, Hopwood D A. *Practical Streptomyces genetics*. Norwich England: John Innes Foundation; 2000: 46-56.
  39. Rychlik W. OLIGO 7 primer analysis software. *Methods Mol Biol*. 2007; 402: 35-60.
  40. Sambrook J, Russel DW. *Molecular cloning: a laboratory manual*. In: Sambrook J, Russel DW, editors. 3rd ed. New York: Cold Spring Harbour Laboratory Press; 2001; 44-47.
  41. Hojati Z, Milne C, Harvey B, Gordon L, Borg M, Flett F, et al. Structure, biosynthetic origin, and engineered biosynthesis of calcium-dependent antibiotics from *Streptomyces coelicolor*. *Chem Biol*. 2002; 9(11): 1175-1187.
  42. Song JY, Jensen SE, Lee KJ. Clavulanic acid biosynthesis and genetic manipulation for its overproduction. *Appl Microbiol Biotechnol*. 2010; 88(3): 659-669.
-